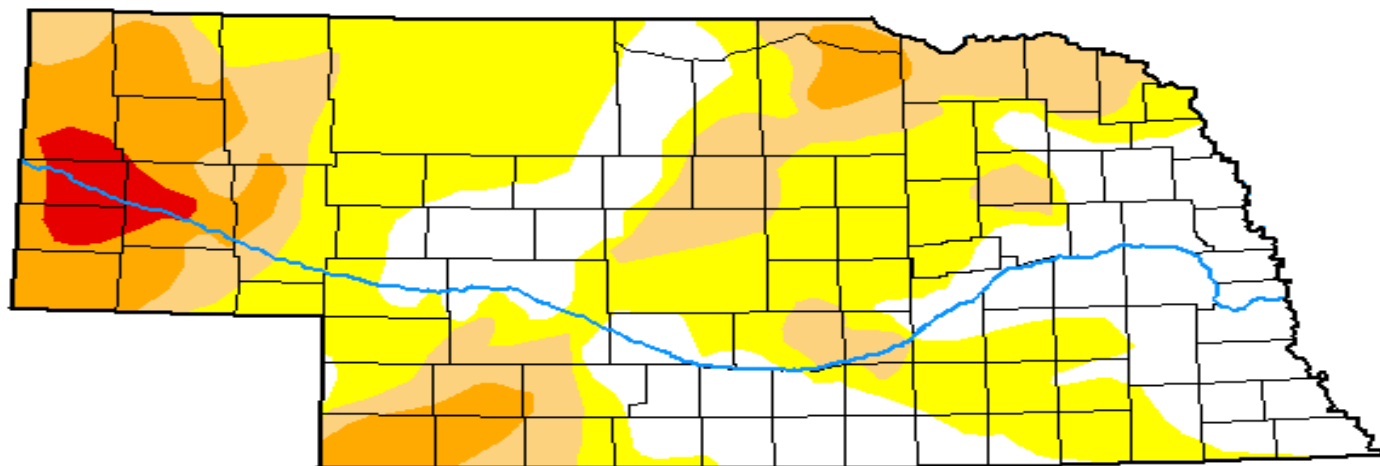


U.S. Drought Monitor Nebraska

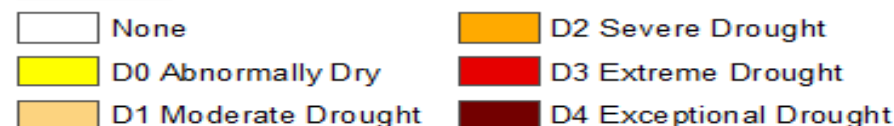
November 2, 2021
(Released Thursday, Nov. 4, 2021)
Valid 8 a.m. EDT



Drought Conditions (Percent Area)

	None	D0-D4	D1-D4	D2-D4	D3-D4	D4
Current	30.61	69.39	31.57	13.98	2.32	0.00
Last Week <i>10-26-2021</i>	19.85	80.15	39.68	15.06	2.80	0.00
3 Months Ago <i>08-03-2021</i>	24.52	75.48	28.43	5.73	0.48	0.00
Start of Calendar Year <i>12-29-2020</i>	0.00	100.00	99.13	50.99	24.41	0.00
Start of Water Year <i>09-28-2021</i>	14.89	85.11	42.20	15.71	0.72	0.00
One Year Ago <i>11-03-2020</i>	0.00	100.00	89.44	51.35	11.96	0.00

Intensity:



The Drought Monitor focuses on broad-scale conditions. Local conditions may vary. For more information on the Drought Monitor, go to <https://droughtmonitor.unl.edu/About.aspx>

Author:

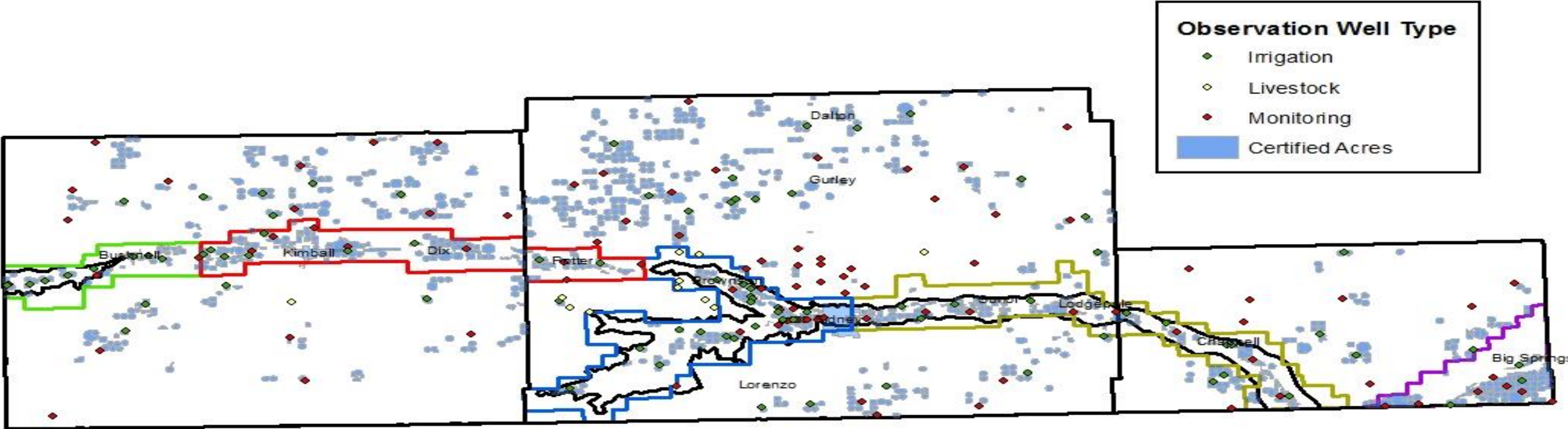
Adam Hartman
NOAA/NWS/NCEP/CPC



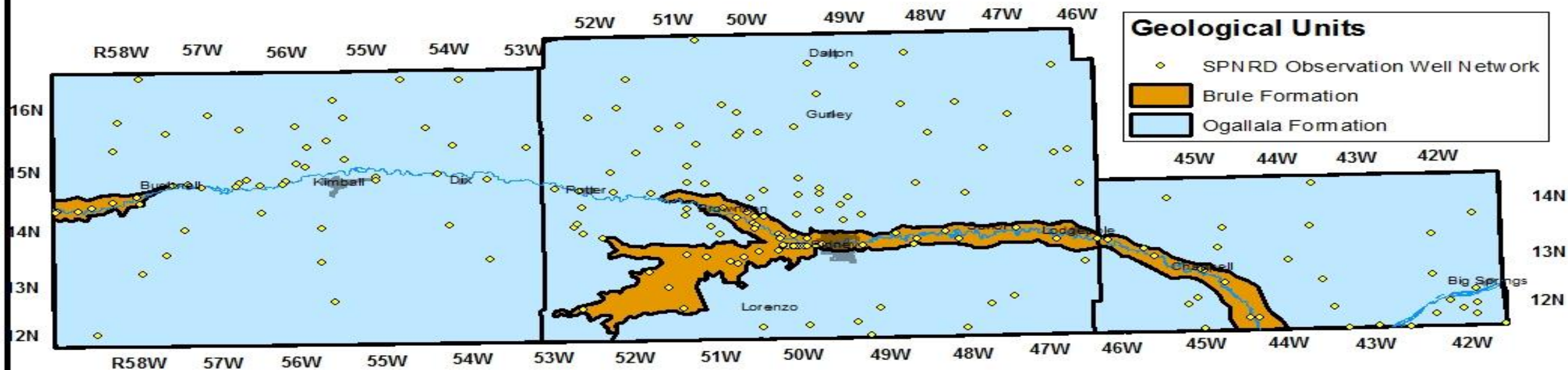
droughtmonitor.unl.edu



SPNRD Observation Well Network



SPNRD Geological Breakdowns



All wells located within each geological unit are only influenced by wells within each sole unit. That is, wells located in the southern ogallala unit are only influenced by the wells located there. It does not "share" water, nor is it influenced with wells in the Brule Formation. As of this time, the SPNRD has determined there is no hydrologic connectivity between the brule and ogallala formations, respectively. All maps have been created in this manner. The geological units described above are derived from the Platte River Cooperative Hydrology Study (COHYST).

Cone of Depression

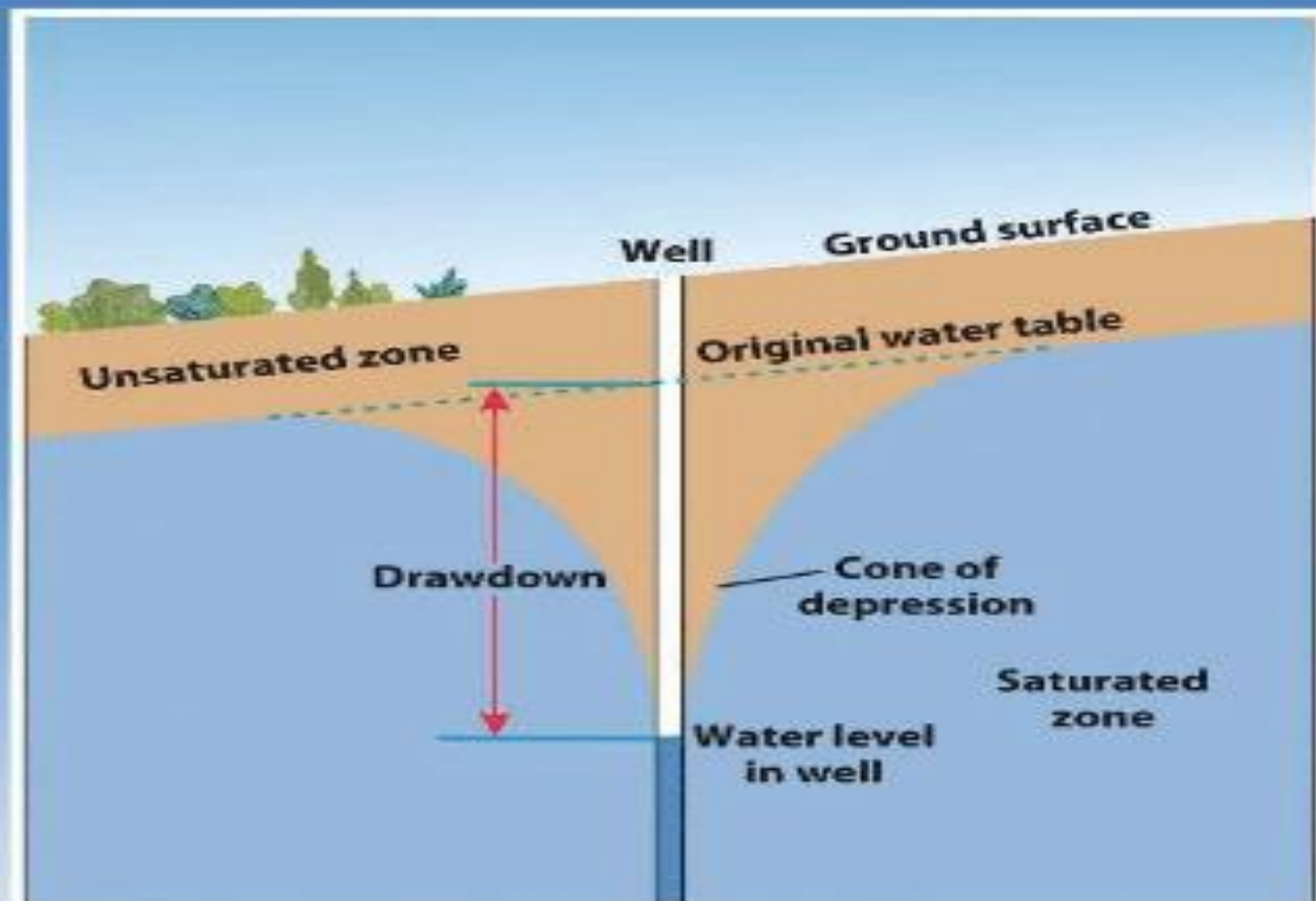


Figure 11.10
© 2012 John Wiley & Sons, Inc. All rights reserved.

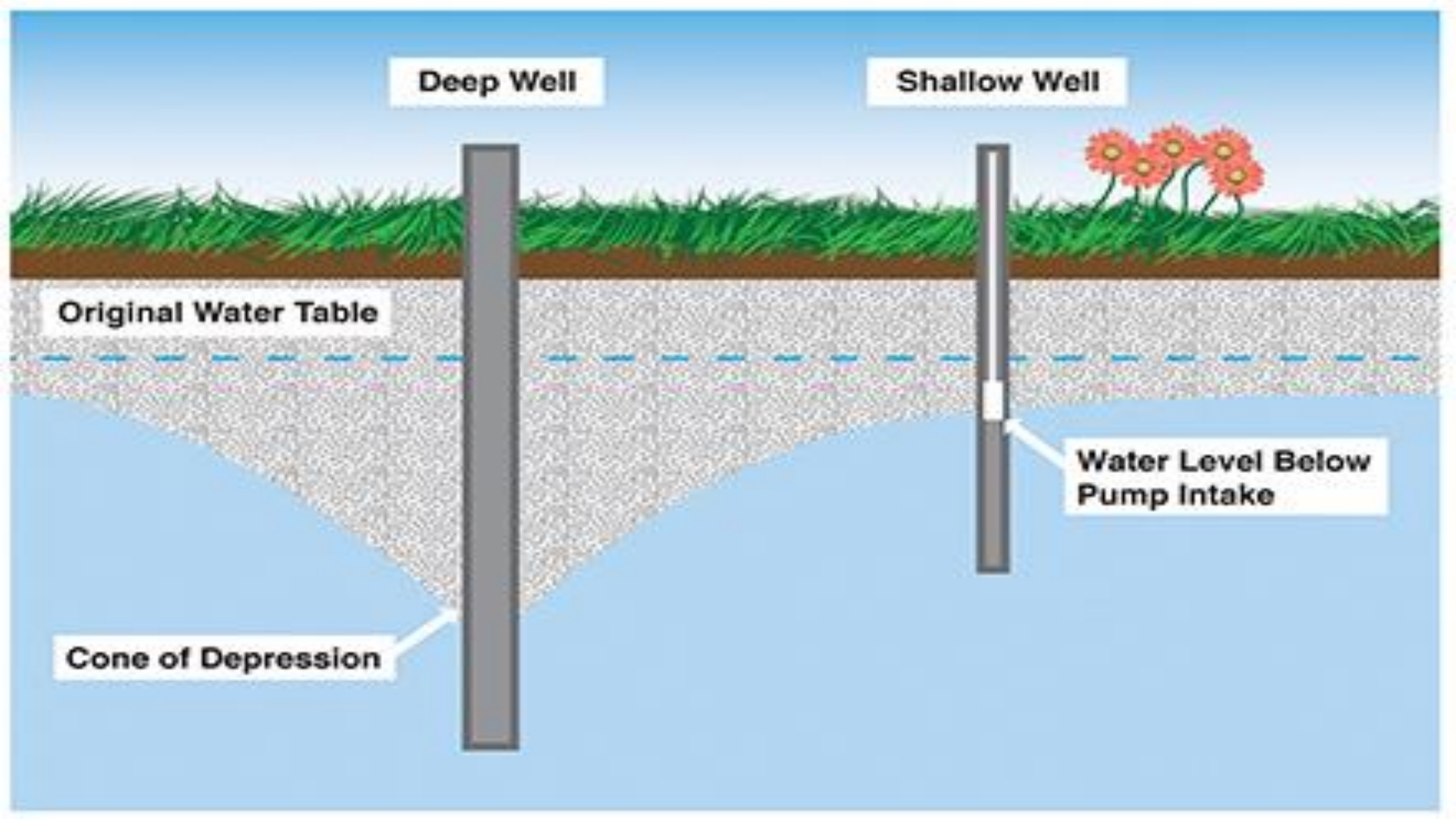
Deep Well

Shallow Well

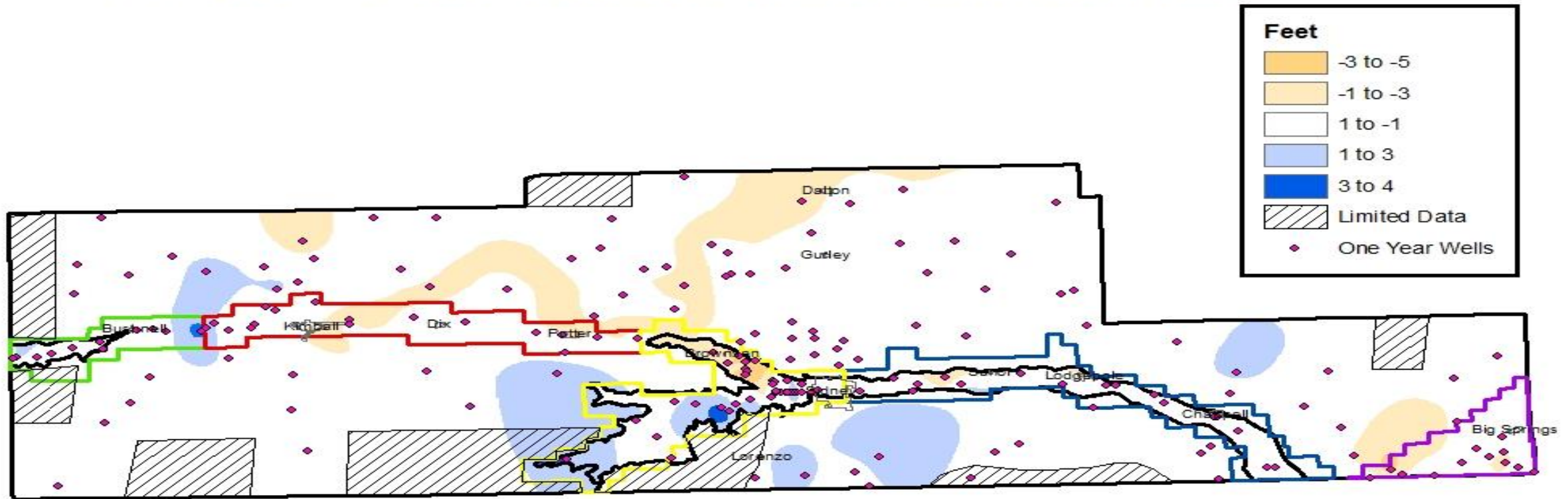
Original Water Table

Cone of Depression

Water Level Below Pump Intake



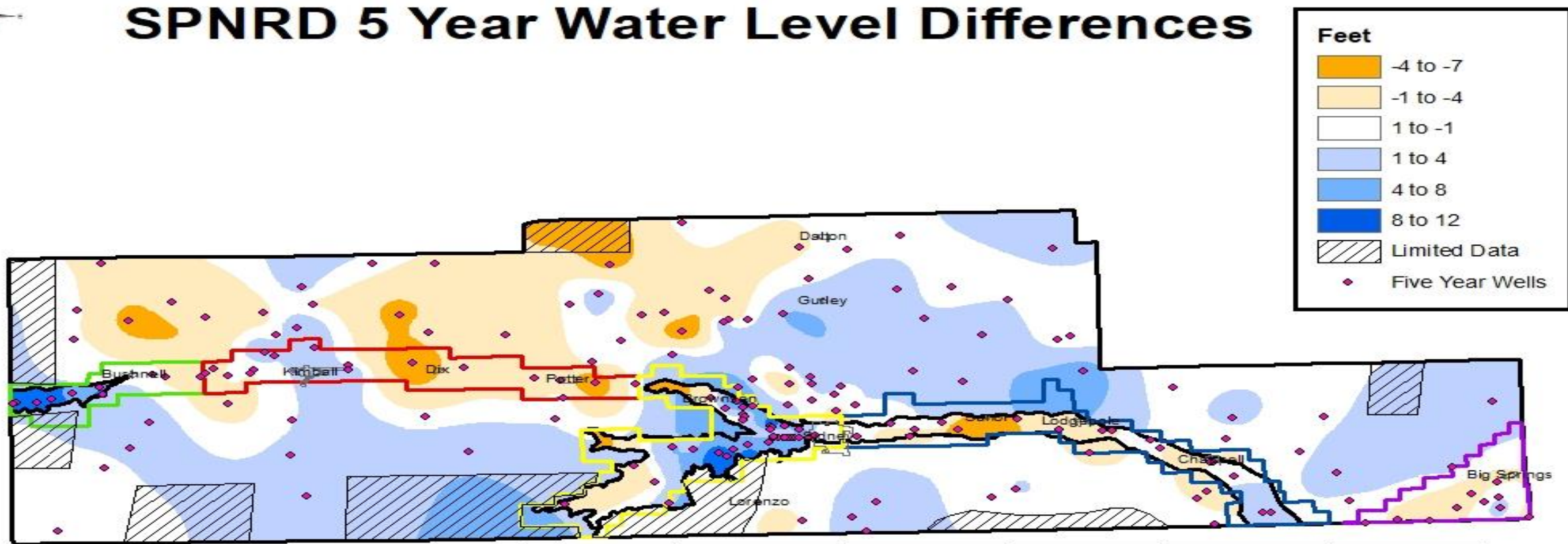
SPNRD 1 Year Water Level Differences



South Platte NRD 1 Year Stats by Subarea

Subarea	Ave.	Max	Min	Count	Decline	%Decline
Pine Bluffs to Oliver	0.32	3.55	-1.67	12	6	50%
Oliver to Buffalo Bend	-0.07	2.65	-1.55	19	10	52%
Buffalo Bend to Sidney	-0.29	3.41	-4.6	37	19	51%
Sidney to Colorado	-0.18	0.52	-2.87	17	6	35%
South Platte Valley	-0.48	0.51	-3.86	13	7	54%
Fully Appropriated	0.18	2.88	-2.4	99	28	28%
Districtwide	-0.02	3.55	-4.6	197	76	39%

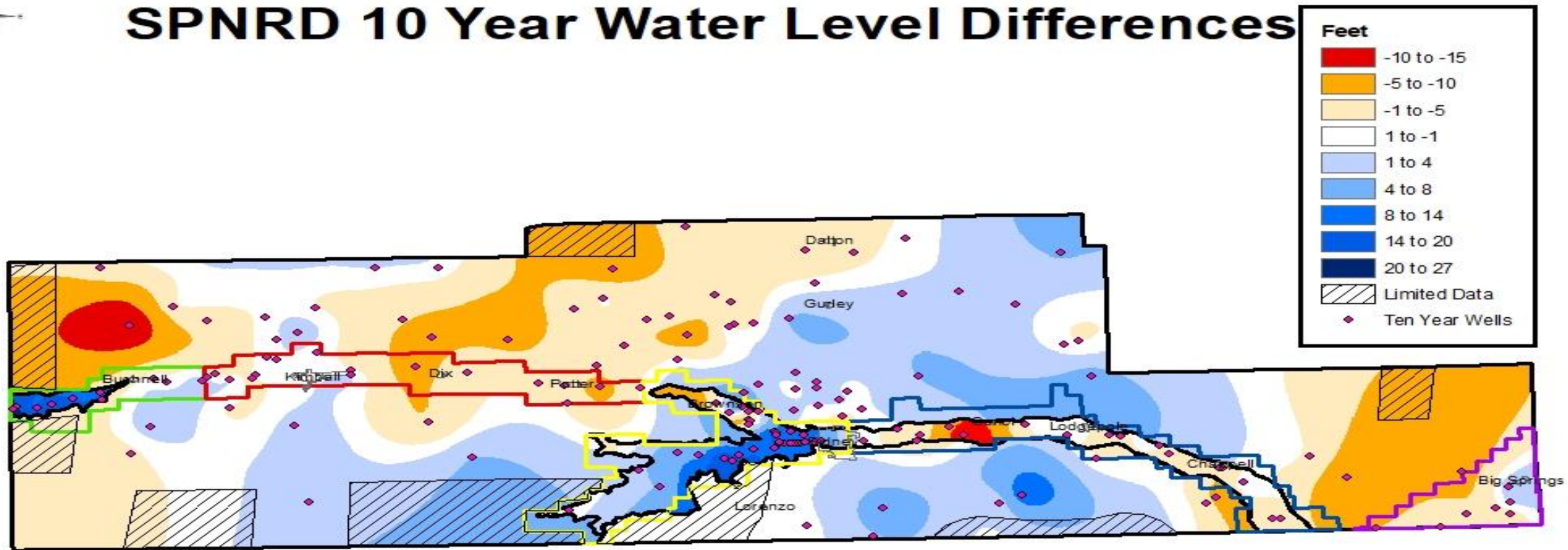
SPNRD 5 Year Water Level Differences



South Platte NRD 5 Year Stats by Subarea

Subarea	Ave.	Max	Min	Count	Decline	%Decline
Pine Bluffs to Oliver	3.9	8.89	-1.38	11	2	18%
Oliver to Buffalo Bend	-1.0	1.62	-6.69	19	15	78%
Buffalo Bend to Sidney	2.17	11.3	-5.63	37	11	30%
Sidney to Colorado	-1.19	0.3	-3.87	17	15	88%
South Platte Valley	-1.7	0.1	-3.9	11	10	91%
Fully Appropriated	0.3	8.58	-7.21	96	42	44%
Districtwide	0.5	11.3	-7.21	191	95	50%

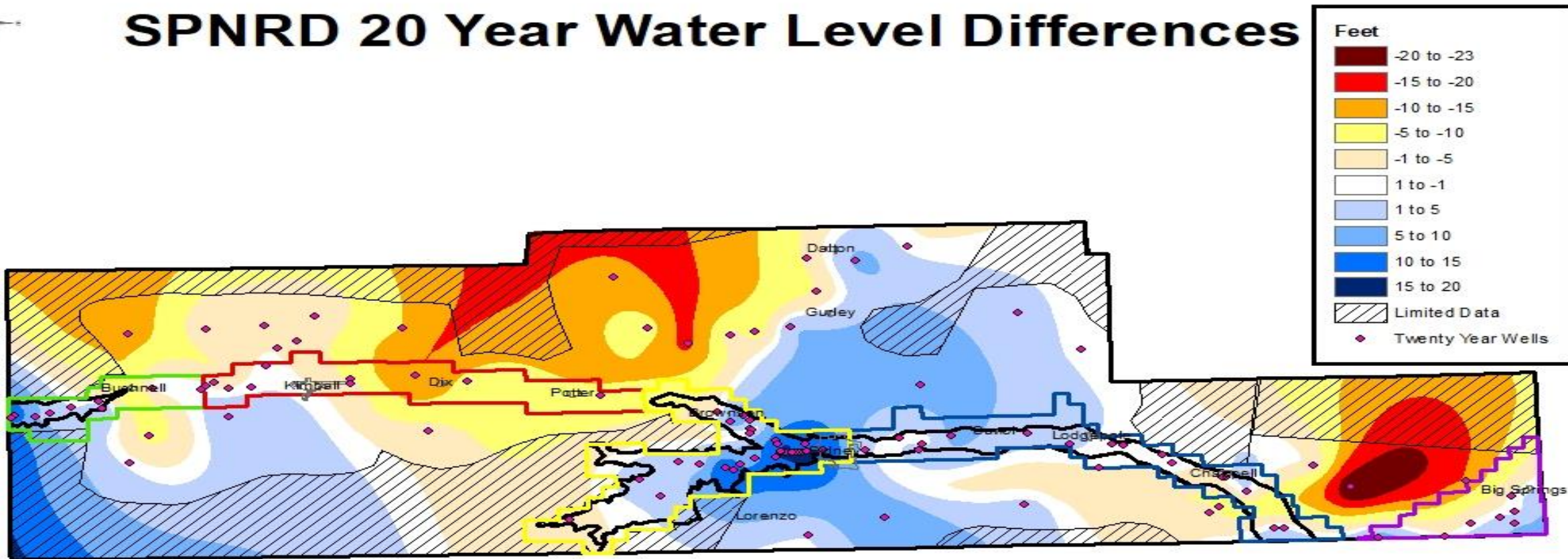
SPNRD 10 Year Water Level Differences



South Platte NRD 10 Year Stats by Subarea

Subarea	Ave.	Max	Min	Count	Decline	%Decline
Pine Bluffs to Oliver	12.75	26.43	-0.28	11	1	9%
Oliver to Buffalo Bend	-1.32	1.43	-6.87	19	13	68%
Buffalo Bend to Sidney	8.38	18.75	-5.44	36	6	17%
Sidney to Colorado	-2.87	0.44	-13.68	17	14	82%
South Platte Valley	-2.1	2.46	-7.94	8	6	75%
Fully Appropriated	-0.55	10.17	-14.26	78	39	50%
Districtwide	1.83	26.43	-14.26	169	79	47%

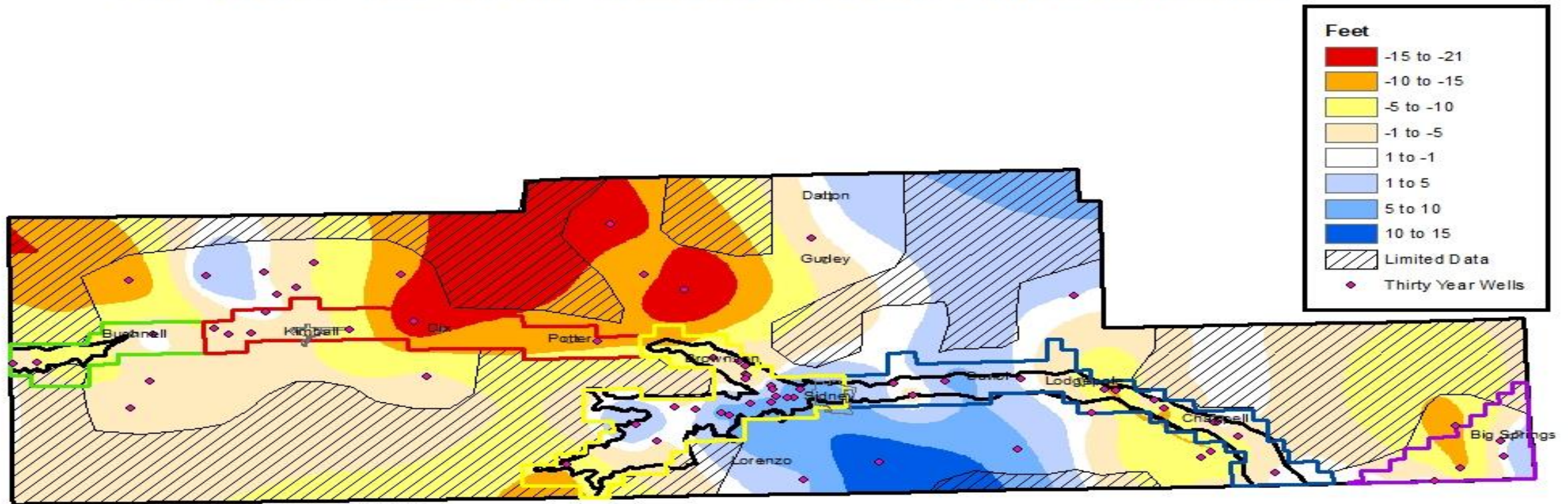
SPNRD 20 Year Water Level Differences



South Platte NRD 20 Year Stats by Subarea

Subarea	Ave.	Max	Min	Count	Decline	%Decline
Pine Bluffs to Oliver	5.18	15.111	-0.99	10	2	20%
Oliver to Buffalo Bend	-4.67	0.38	-14.77	10	8	80%
Buffalo Bend to Sidney	9.54	20.63	-3.1	30	3	10%
Sidney to Colorado	1.2	5.94	-1.71	16	3	19%
South Platte Valley	-0.25	7.82	-1.71	8	4	50%
Fully Appropriated	-3.24	8.74	-23.93	32	21	66%
Districtwide	1.93	20.63	-23.93	106	41	39%

SPNRD 30 Year Water Level Differences



South Platte NRD 30 Year Stats by Subarea

Subarea	Ave.	Max	Min	Count	Decline	%Decline
Pine Bluffs to Oliver	-2.2	0.0	-5.4	3	2	67%
Oliver to Buffalo Bend	-6.34	0.6	-18.65	7	6	86%
Buffalo Bend to Sidney	1.29	8.22	-9.32	21	10	48%
Sidney to Colorado	-2.73	5.34	-10.69	12	8	67%
South Platte Valley	-4.38	0.3	-10.77	5	4	80%
Fully Appropriated	-4.17	13.57	-20.24	21	16	76%