

2009
South Platte Natural Resources District
Ground Water Quality Monitoring Program Report

The SPNRD has completed its eighteenth year of monitoring nitrates in the District. Monitoring wells are sampled quarterly while irrigation and domestic wells are sampled twice a year between May and October, if possible.

Of the 159 network wells, 117 were sampled at least once this year. This breaks down to 61 of 64 domestic wells and 61 of 94 irrigation wells. Some irrigation wells were unable to be sampled for the following reasons: enrolled in temporary deferment, EQIP Special Initiative, Pivot Conversion (well is no longer used, or no way to collect a sample at the well). Some wells were not used very often, or not used at all throughout the year, and the staff was unable to monitor them. The 40 monitoring wells in the District were sampled quarterly along with eight City of Sidney Municipal wells. The remainder of the samples taken over the summer included duplicates and samples taken for individuals requesting nitrate analysis.

Quality Assurance/Quality Control (QA/QC) measures were followed during sampling. The primary method used for QA/QC was duplicate sampling. One duplicate was taken for every 10 samples. The relative percent difference (RPD) was determined from the two duplicate samples. An average of this percent is then calculated for all the RPD's. This year's average was 0.132.

Items to take into consideration when reviewing the following information are:

- The SPVGWMA qualifies for the Phase III contamination trigger. The Phase III trigger can be initiated when; average nitrate-nitrogen levels exceed 9.5 ppm for three consecutive years during Phase II.
- The number of samples collected in the SGWMA are fewer than in years past because some wells are not currently being used. If these wells become active in the future, the average nitrate-nitrogen level for the area could be affected.
- Combining the Deuel County/Sidney ground water management subarea rules and regulations into the districtwide ground water management area rules and regulations.

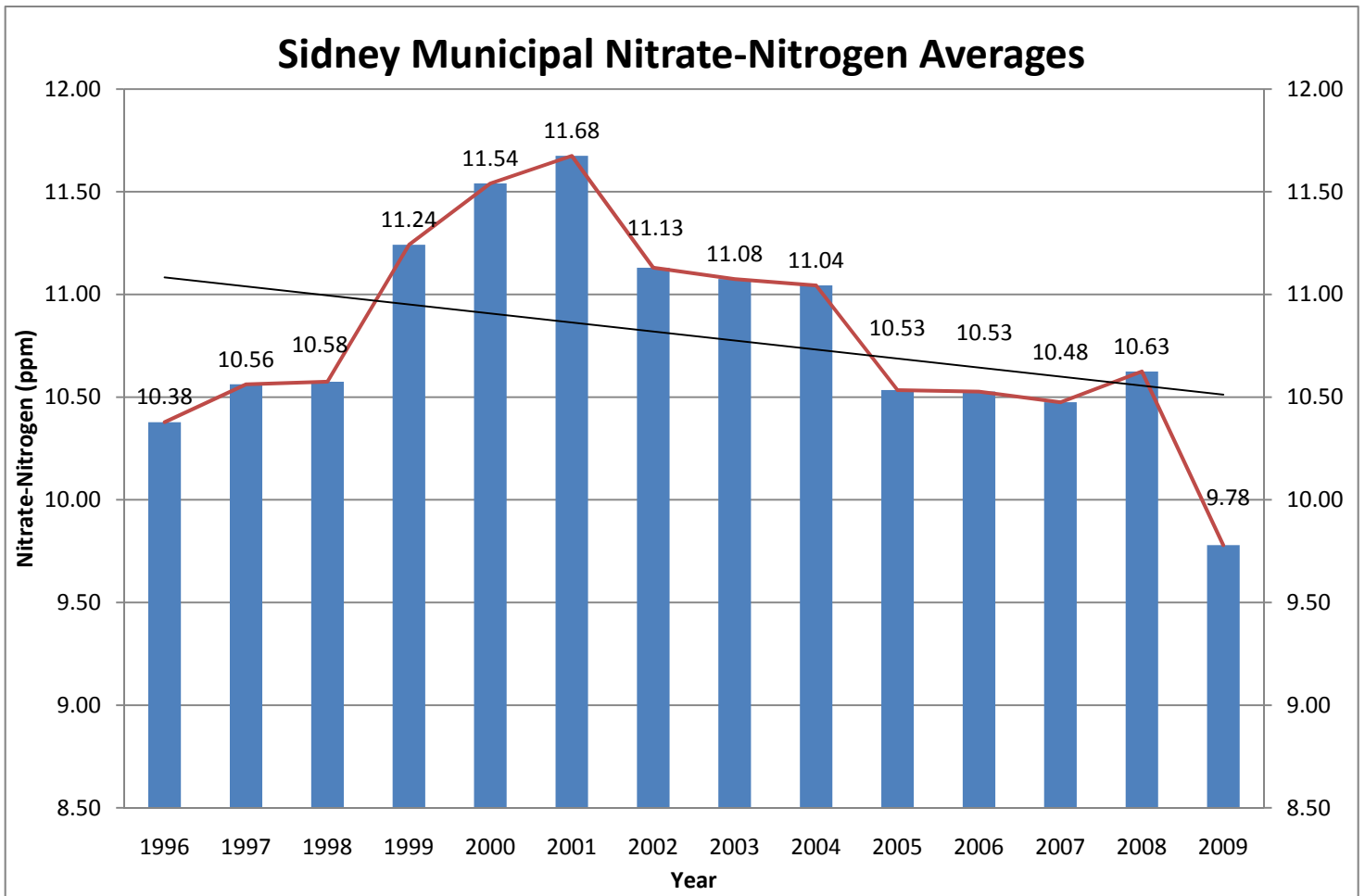
NITRATE AVERAGES FOR TARGET AREAS OF THE DISTRICT

Target Area	2002	2003	2004	2005	2006	2007	2008	2009
City of Sidney Municipal Wells	11.13	11.08	11.05	10.54	10.53	10.48	10.63	9.78
Sidney Draw Trigger Monitoring Wells	13.49	13.36	13.13	12.39	11.98	11.06	10.50	9.56
Sidney GWMA Network Wells	6.81	5.17	6.05	4.44	4.10	4.68	4.48	4.02
Composite Average SGWMA	9.42	9.01	9.07	8.46	8.23	8.41	8.08	7.53
East Lodgepole Valley GWMA Network Wells	7.13	7.22	7.18	6.88	6.97	6.57	6.0	6.43
East Lodgepole Valley Monitoring Wells	7.81	8.22	7.67	6.85	6.97	6.72	7.8	9.09
Composite Average East Lodgepole Valley GWMA	7.26	7.33	7.28	6.95	7.05	6.43	6.18	6.73
West Lodgepole Valley Cheyenne County	5.77	5.41	5.94	5.50	5.34	6.01	5.05	4.47
South Platte Valley GWMA Network Wells	10.81	10.70	10.18	10.16	10.14	10.08	10.14	8.85
South Platte Valley Monitoring Wells	11.69	10.60	11.03	11.08	10.89	11.54	11.00	11.35
Composite Average South Platte Valley GWMA	11.12	10.79	10.55	10.55	10.52	10.39	10.33	9.50
Lodgepole Valley (DC) GWMA Network Wells	7.01	6.27	6.70	7.24	7.38	6.95	6.70	7.14
Lodgepole Valley (DC) Monitoring Wells	5.58	5.37	4.90	4.42	4.61	4.47	4.60	4.60
Composite Average Lodgepole Valley GWMA	6.74	6.11	6.36	6.73	6.82	6.76	6.26	6.54
Lodgepole Valley (KC) Network Wells	5.73	5.27	5.50	5.26	5.12	4.88	4.61	4.67
Lodgepole Valley (KC) Monitoring Wells	6.53	5.84	6.18	6.08	6.33	5.85	5.62	5.83
Composite Average Lodgepole Valley KC	5.60	5.26	5.48	5.25	5.20	5.03	4.76	4.88

Nitrate Averages in ppm - Irrigation vs. Domestic Wells in 2009		
Target Areas	Irrigation	Domestic
Kimball County	4.14	5.28
Cheyenne County	7.25	8.51
Deuel County	5.23	5.49

City of Sidney Municipal Nitrate-Nitrogen Averages

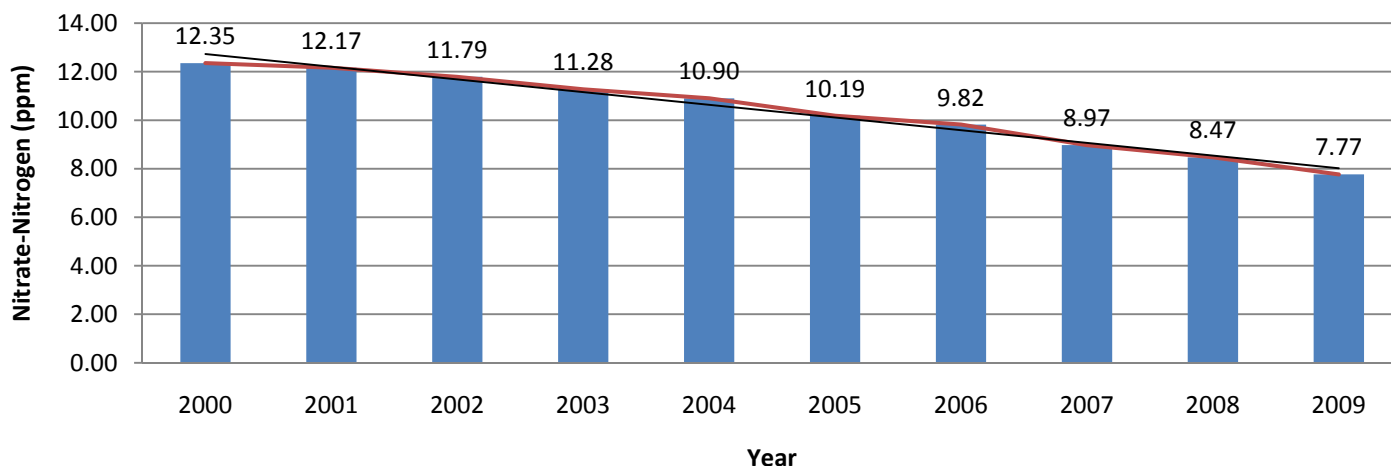
Well ID	1996	1997	1998	1999	2000	2001	2002	2003	2004	2005	2006	2007	2008	2009
SMW-1	13.25	13.40	12.98	13.60	13.95	13.85	13.36	13.87	13.68	12.80	13.37	12.60	12.55	11.80
SMW-2	13.35	13.40	13.23	14.73	14.98	15.10	14.46	14.18	13.63	12.98	12.90	12.17	12.43	11.10
SMW-3	11.08	11.20	11.03	12.13	12.38	12.88	12.54	13.42	13.50	13.38	13.20	13.93	13.38	12.77
SMW-4	8.48	8.20	7.78	8.00	8.30	8.45	7.50	7.85	8.08	8.08	7.75	7.60	7.93	7.63
SMW-6	13.90	14.70	14.73	15.40	15.58	14.90	14.86	13.42	14.33	13.28	14.33	13.80	14.13	12.77
SMW-7	10.45	10.30	11.08	11.53	12.03	12.50	10.76	10.23	9.70	8.68	8.45	8.23	8.53	8.03
SMW-8	7.15	7.55	8.20	7.70	7.78	7.88	7.80	7.47	6.90	6.83	6.65	6.88	7.15	6.60
SMW-9	5.38	5.75	5.60	6.85	7.35	7.85	7.76	8.17	8.55	8.28	7.58	8.60	8.90	7.53
AVG	10.38	10.56	10.58	11.24	11.54	11.68	11.13	11.08	11.04	10.53	10.53	10.48	10.63	9.78



Sidney Draw Monitoring Wells

Well ID	2000	2001	2002	2003	2004	2005	2006	2007	2008	2009
SD-1	12.73	11.63	10.35	9.50	9.28	9.22	9.30	8.93	8.30	8.03
SD-10	14.76	14.78	14.40	14.47	14.18	13.66	13.45	12.23	11.78	11.48
SD-12-D	16.44	16.20	16.10	15.40	15.05	14.35	14.18	13.70	13.50	11.10
SD-12-S	17.94	17.85	16.63	16.73	16.48	15.45	15.08	14.53	14.1	11.85
SD-14	14.37	14.47	14.40							
SD-15	3.75	4.40	5.05	5.98	5.16	4.48	4.30	3.80	3.54	4.22
SD-16	2.18	2.05	2.02	1.70	2.06	1.94	2.03	1.85	1.76	1.95
SD-2	14.25	12.85	10.72	9.06	7.50	7.10	6.68	5.28	4.68	4.15
SD-3	13.15	12.28	11.68	10.80	9.60	8.32	7.45	6.06	5.25	5.10
SD-4	10.70	11.13	11.00	10.80	10.33	9.40	8.80	7.88	7.06	6.92
SD-6	14.30	14.13	13.65	13.75	13.48	12.43	11.68	10.68	9.94	9.36
SD-7-D	11.73	12.03	12.30	12.40	12.63	12.13	11.78	10.83	10.20	8.94
SD-7-S	14.33	14.38	15.00	14.73	15.12	13.78	13.15	11.94	11.50	10.10
AVG	12.35	12.17	11.79	11.28	10.90	10.19	9.82	8.97	8.47	7.77

Sidney Draw Annual Averages for all Monitoring Wells

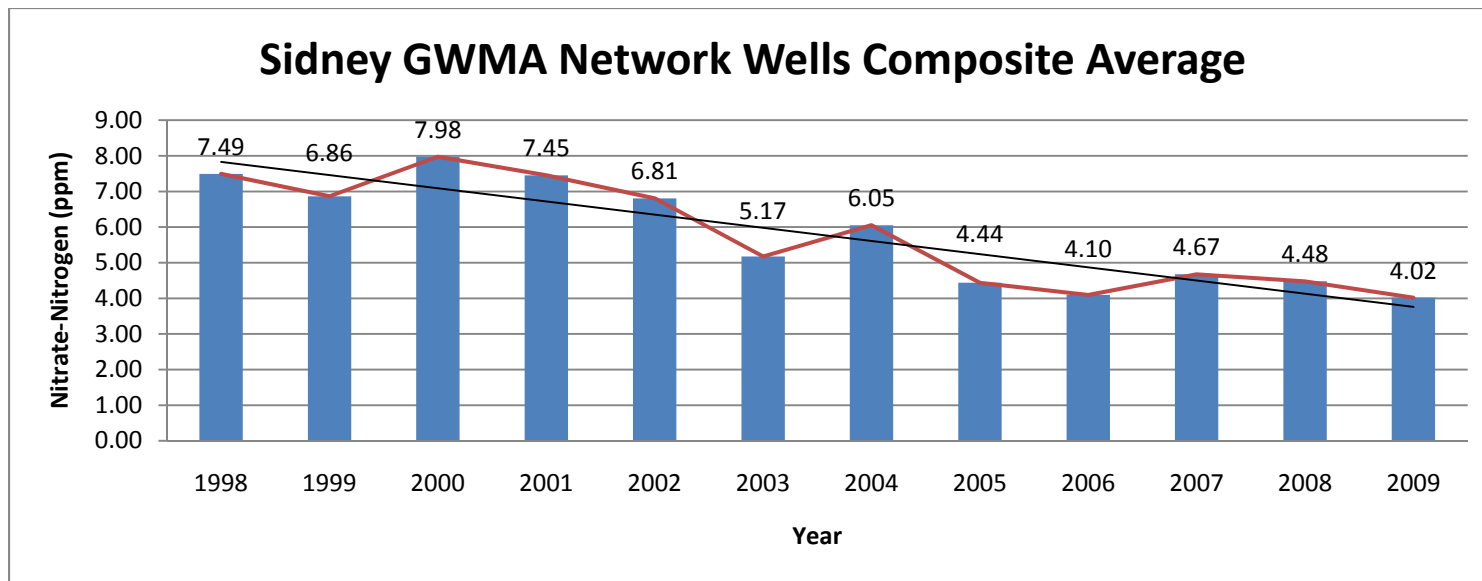


Wells Included in Triggers

Well ID	2000	2001	2002	2003	2004	2005	2006	2007	2008	2009
SD-10	14.76	14.78	14.40	14.47	14.18	13.66	13.45	12.23	11.92	11.48
SD-12-D	16.44	16.20	16.10	15.40	15.05	14.35	14.18	13.70	13.50	11.10
SD-4	10.70	11.13	11.00	10.80	10.33	9.40	8.80	7.88	7.18	6.92
SD-6	14.30	14.13	13.65	13.75	13.48	12.43	11.68	10.68	9.97	9.36
SD-7-D	11.73	12.03	12.30	12.40	12.63	12.13	11.78	10.83	10.20	8.94
AVG	13.59	13.65	13.49	13.36	13.13	12.39	11.98	11.06	10.55	9.56

Sidney Ground Water Management Area

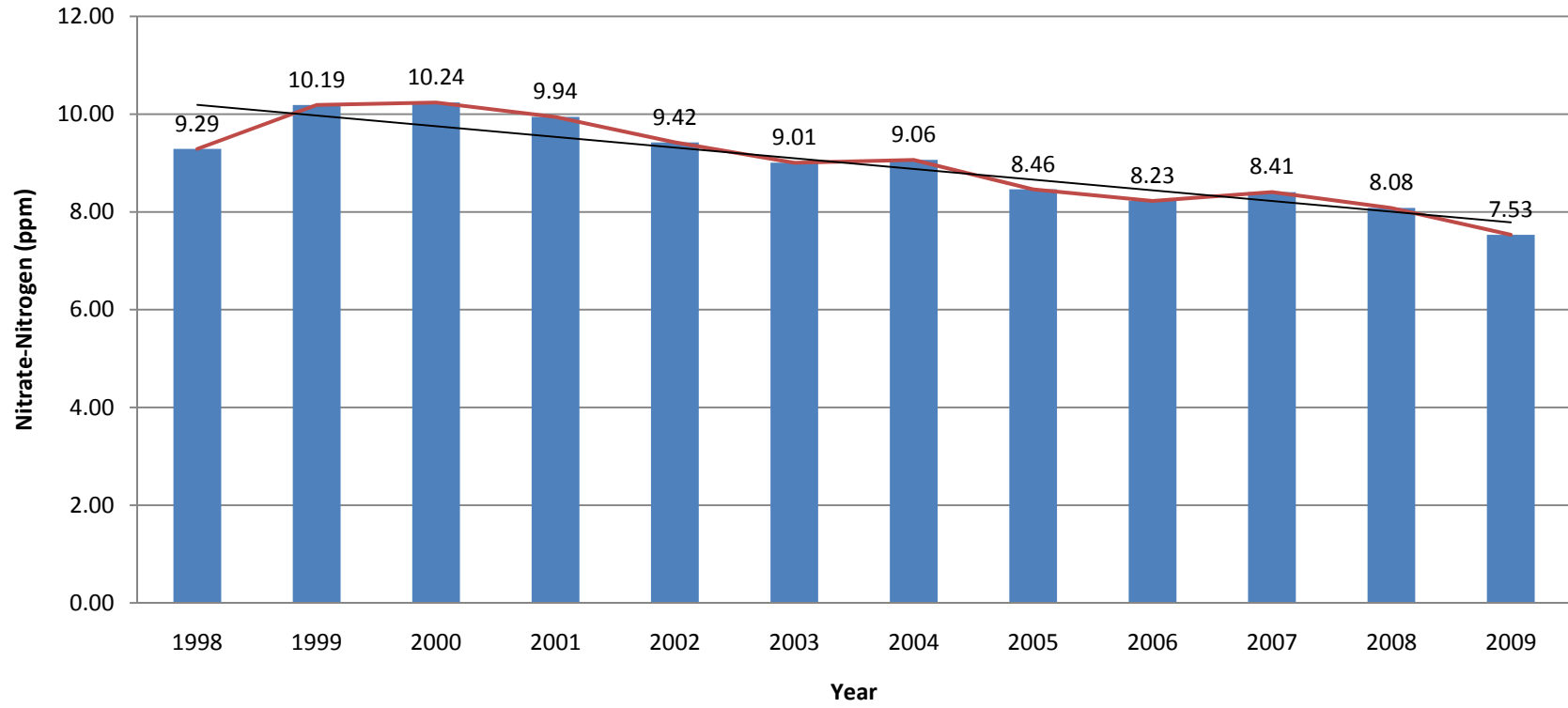
Owner Name	Well ID	Legal	1998	1999	2000	2001	2002	2003	2004	2005	2006	2007	2008	2009
Bob Kurz Jr.	D065	13-50-4DAA	1.45	1.85	2.15	2.10	4.05	0.80	1.40	1.00	1.17	0.80	3.95	1.00
Chris Schilz	D068	14-50-33A	9.10	9.30	7.30	5.80	1.15	1.10	1.10	1.20	1.10	1.20	1.20	1.70
Elizabeth Beyer	D060	14-50-18ACD	4.60			5.07	2.80	1.65	1.85	1.70	1.55	1.30	3.75	4.65
Sharon Travis	D058	14-50-20CC	4.90	4.60	4.50	3.95	4.60	4.55	4.60	4.50	4.65	5.10	1.05	4.35
Wanda Rezac	D069	14-50-28A	6.25	5.90	7.47	5.90	6.05	5.70	5.55	5.75	5.55	5.50	4.55	5.30
Dan Phelps	I061	14-50-18CC	3.15		2.90	2.90	3.25	3.50	3.45	2.93	3.05			2.60
Dinklage Feed Yards	I067	14-50-34BBB	8.40	8.45	8.65	10.05	8.25	8.77	7.75	7.50	6.50			
Frank Rauner	I071	14-50-36BD	11.55		11.85	12.20	12.80							
John Hinrichs	I070	14-50-36AA	13.40		12.48	12.90	11.35		13.00			8.30	8.30	
Mark Ernst	I063	13-51-11DD	9.15		8.90	9.00	8.55	7.57	7.40		6.80		3.90	
Paul Hutchison	I064	13-50-7B	7.10	7.65	8.10	7.50	8.03	7.90	7.95	7.05	6.50	6.60	5.50	5.50
Richard Mohatt	I066	13-50-4AB	9.50	10.30	9.43	9.27	7.60		7.40	8.30				
Vern Beyer	I059	14-50-29BA	8.85		12.00	10.25	10.00	10.20	11.17			8.60	8.10	7.05
AVG			7.49	6.86	7.98	7.45	6.81	5.17	6.05	4.44	4.10	4.68	4.48	4.02



Sidney Ground Water Management Composite Averages

Owner Name	Well ID	Legal	1998	1999	2000	2001	2002	2003	2004	2005	2006	2007	2008	2009
Bob Kurz Jr.	D065	13-50-4DAA	1.45	1.85	2.15	2.10	4.05	0.80	1.40	1.00	1.17	0.80	3.95	1.00
Chris Schilz	D068	14-50-33A	9.10	9.30	7.30	5.80	1.15	1.10	1.10	1.20	1.10	1.20	1.20	1.70
Elizabeth Beyer	D060	14-50-18ACD	4.60			5.07	2.80	1.65	1.85	1.70	1.55	1.30	3.75	4.65
Sharon Travis	D058	14-50-20CC	4.90	4.60	4.50	3.95	4.60	4.55	4.60	4.50	4.65	5.10	1.05	4.35
Wanda Rezac	D069	14-50-28A	6.25	5.90	7.47	5.90	6.05	5.70	5.55	5.75	5.55	5.50	4.55	5.30
Dan Phelps	I061	14-50-18CC	3.15		2.90	2.90	3.25	3.50	3.45	2.93	3.05			2.60
Dinklage Feed Yards	I067	14-50-34BBB	8.40	8.45	8.65	10.05	8.25	8.77	7.75	7.50	6.50			
Frank Rauner	I071	14-50-36BD	11.55		11.85	12.20	12.80							
John Hinrichs	I070	14-50-36AA	13.40		12.48	12.90	11.35		13.00			8.30	8.30	
Mark Ernst	I063	13-51-11DD	9.15		8.90	9.00	8.55	7.57	7.40		6.80		3.90	
Paul Hutchison	I064	13-50-7B	7.10	7.65	8.10	7.50	8.03	7.90	7.95	7.05	6.50	6.60	5.50	5.50
Richard Mohatt	I066	13-50-4AB	9.50	10.30	9.43	9.27	7.60		7.40	8.30				
Vern Beyer	I059	14-50-29BA	8.85		12.00	10.25	10.00	10.20	11.17			8.60	8.10	7.05
SPNRD	SD-10		12.98	14.53	14.76	14.78	14.40	14.47	14.18	13.66	13.45	12.23	11.78	11.48
	SD-12-D		14.33	15.88	16.44	16.20	16.10	15.40	15.05	14.35	14.18	13.70	13.50	11.10
	SD-4		10.73	11.13	10.70	11.13	11.00	10.80	10.33	9.40	8.80	7.88	7.06	6.92
	SD-6		11.78	13.20	14.30	14.13	13.65	13.75	13.48	12.43	11.68	10.68	9.94	9.36
	SD-7-D		9.73	11.05	11.73	12.03	12.30	12.40	12.63	12.13	11.78	10.83	10.20	8.94
City of Sidney	SMW-1		12.98	13.60	13.95	13.85	13.36	13.87	13.68	12.80	13.37	12.60	12.55	11.80
	SMW-2		13.23	14.73	14.98	15.10	14.46	14.18	13.63	12.98	12.90	12.17	12.43	11.10
	SMW-3		11.03	12.13	12.38	12.88	12.54	13.42	13.50	13.38	13.20	13.93	13.38	12.77
	SMW-4		7.78	8.00	8.30	8.45	7.50	7.85	8.08	8.08	7.75	7.60	7.93	7.63
	SMW-6		14.73	15.40	15.58	14.90	14.86	13.42	14.33	13.28	14.33	13.80	14.13	12.77
	SMW-7		11.08	11.53	12.03	12.50	10.76	10.23	9.70	8.68	8.45	8.23	8.53	8.03
	SMW-8		8.20	7.70	7.78	7.88	7.80	7.47	6.90	6.83	6.65	6.88	7.15	6.60
	SMW-9		5.60	6.85	7.35	7.85	7.76	8.17	8.55	8.28	7.58	8.60	8.90	7.53
	Annual Avg.		9.29	10.19	10.24	9.94	9.42	9.01	9.06	8.46	8.23	8.41	8.08	7.53

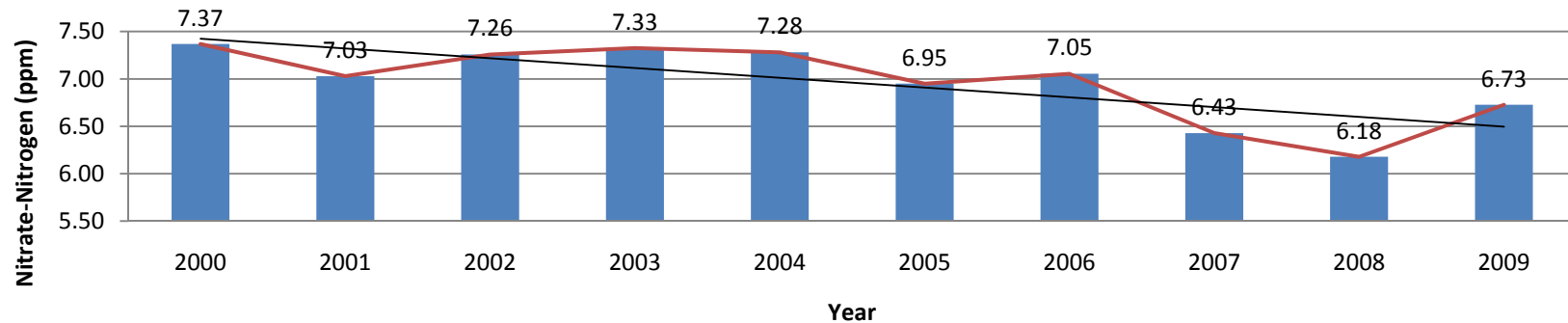
SGWMA Composite Averages



East Lodgepole Valley Subarea for Ground Water Quality

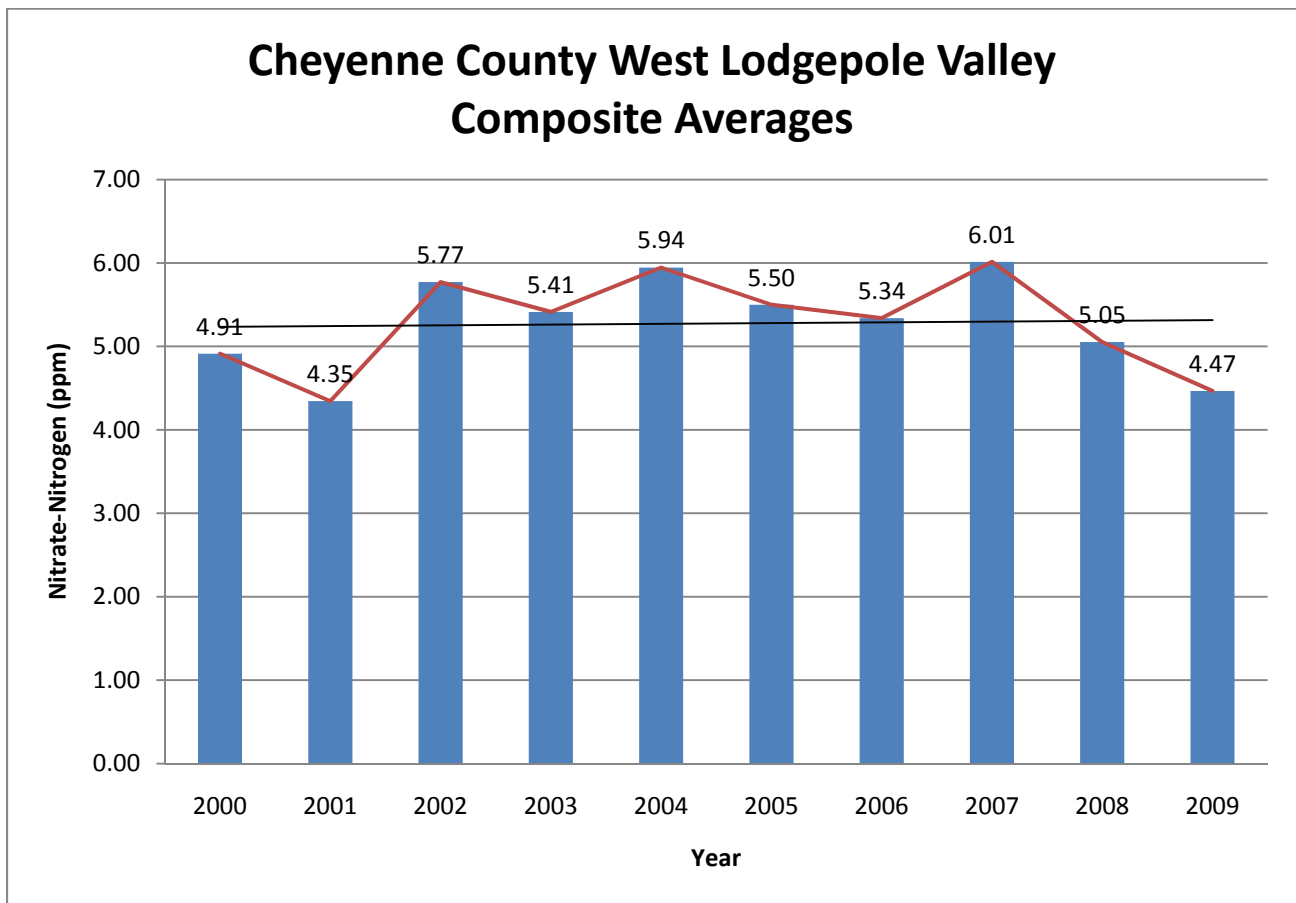
Owner Name	Well ID	Legal	2000	2001	2002	2003	2004	2005	2006	2007	2008	2009
B & Dk-Lawn	D152	14-47-30DA	6.75	7.05	7.43	7.40	8.00	8.35	8.45	8.40	7.30	7.70
Dave Johnson	D151	14-48-26DBB	7.00	6.85	7.70	7.00	7.95	7.70	7.50	7.90	6.25	7.85
Don Sharman	D153	14-47-28CC	2.65	4.40	4.55	5.00	4.30	4.60	4.65	4.20	4.80	5.70
Doyle Misegadis	D150	14-48-28BD	6.20	6.00	6.30	6.27	5.93	5.60	5.75	5.40	5.00	5.85
Gene White	D082	14-49-34B	14.57	15.10	13.90	15.15	15.10	14.40	13.67	13.50	9.33	12.45
Jim From	D154	14-47-27DA	6.80	5.40	6.30	6.35	6.20	6.15	6.03	5.90	5.30	5.90
Richard Krueger	D147	14-48-29C	7.00	7.60	6.50						4.60	4.40
Scott Hendrickson	D146	14-46-32CA	3.70	3.95	4.13	4.23	4.05	4.27	4.30	4.15	3.85	4.35
Viola Zimola	D152	14-47-30DA	6.75	7.05	7.43	7.40	8.00	8.35	8.45	8.40	7.30	7.70
Bill Behrends	I086	14-47-34DAA	6.70	5.65	5.25	5.20	5.50	4.73	4.95	2.20	4.90	4.80
Bill Steele	I156	14-48-28DCA	5.15	4.43	4.13	4.10	3.90	3.60	3.80	3.55	3.20	2.00
Darrell Sharman	I157	14-47-31CAB	8.35	8.00	7.90	7.80	7.85	7.65	7.50		8.50	7.70
Don Soucie	I087	14-47-35ABA	8.25	8.30	8.15	7.35	5.70	5.75	6.10	6.30	6.30	5.90
John Williams	I155	14-47-36BBA			7.45	7.75						
Ken Peetz	I084	14-49-35BBD	5.25	3.75	5.33	5.20						
Larry Glassburn	I130	14-48-34ACB	8.25	7.30	7.80	7.55	7.60	6.85	6.75	6.50	4.20	
Miller Wheat Farms	I151	14-48-26DBB2	7.83	6.73	7.05	7.15	7.00	6.60	6.70	6.60	6.40	5.80
Randy Faessler	I148	14-48-31DBD	5.40	5.85	5.15	4.95	5.13	4.55	5.65		2.90	4.20
Ron Hadeen	I085	14-47-33DAB	6.73	6.60	6.45	6.80		6.40			5.95	
Rosalie Kielian	I083	14-49-34CBC	15.00		14.05	14.77	13.50	12.80	12.80		11.90	10.60
SPNRD	E-1	14-47-35DDA	4.78	5.43	4.70							
	E-2	14-48-35CBB	7.25	9.65	8.00							
	E-3	14-48-32CBB	10.22	11.02	10.12	7.85	6.73	5.90	6.30	6.40	9.24	11.07
	E-4	14-49-34CCC	8.90	8.53	8.40	8.58	8.60	7.80	7.63	7.03	6.35	7.12
Annual Avg			7.37	7.03	7.26	7.33	7.28	6.95	7.05	6.43	6.18	6.73

East Lodgepole Valley Composite Averages



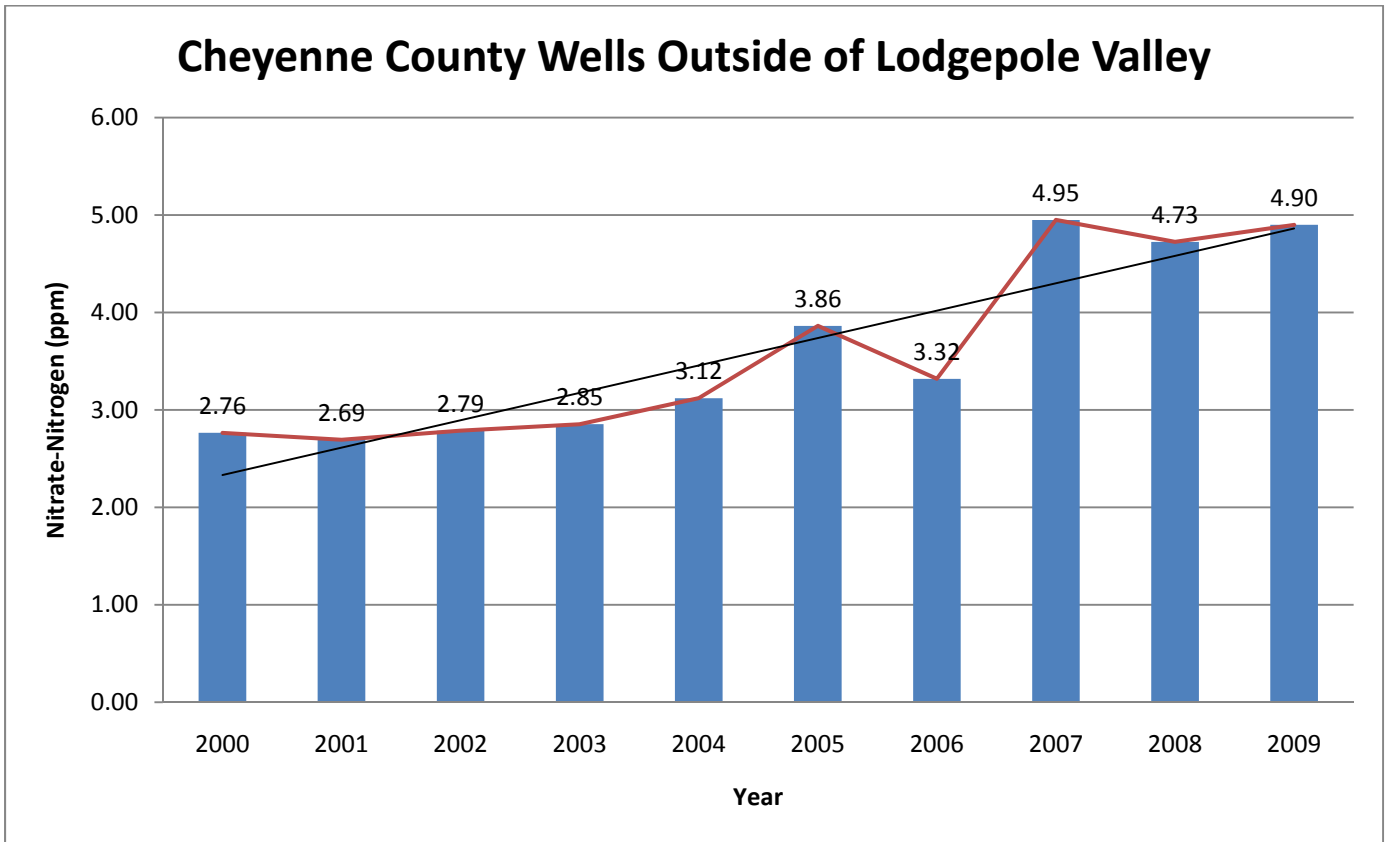
Cheyenne County West Lodgepole Valley

Owner Name	Well ID	Legal	2000	2001	2002	2003	2004	2005	2006	2007	2008	2009
Arvin Nielsen	D049	14-52-4C	3.35	2.80	12.05	5.70	8.20	11.75	9.00	9.00	10.40	8.35
Clinton Shaw	D054	14-52-11B	3.70	2.30	3.90	3.63	3.95	3.50				
Elmer Jung	D048	15-52-31AD	5.65	5.50	5.87	5.83	5.70	5.55	5.33	5.00	3.70	4.75
Harvey George	D056	14-51-8AB	2.05	1.90	2.55	4.10	2.50	1.90	2.03	1.80	1.60	1.53
Rhonda Whartman	D051	14-52-3BB	13.25	11.05	13.05	14.10	15.70	14.25	13.85	19.70	14.25	9.40
Roland R. Madden	D053	14-52-10A	1.63	1.40	1.60	1.60	1.60	1.60	1.65	1.50	1.45	1.70
Brad Hicks	I047	15-53-35DA	4.50	4.65	4.60	4.75	4.60	4.45	4.33		2.90	4.10
Robert Hostetler	I055	14-52-12BA	4.55	4.50	4.50	4.45	4.20	4.00	3.75	3.80		
Russ McMillen	I057	14-51-14BB	3.45	3.25	2.60	2.70		1.90	1.50	1.30	0.97	1.80
Russell Nielsen	I050	14-52-4CA	7.00	6.10	7.00	7.27	7.05	6.10	6.60		5.15	4.10
AVG			4.91	4.35	5.77	5.41	5.94	5.50	5.34	6.01	5.05	4.47



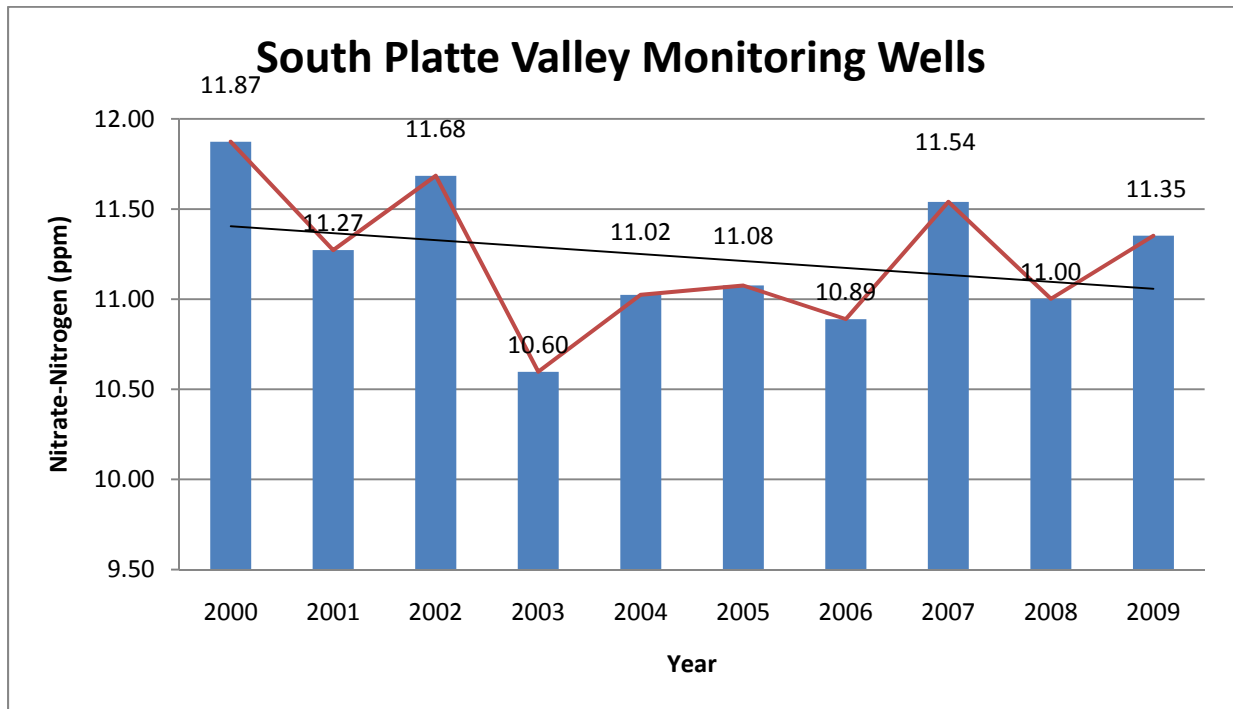
Cheyenne County Wells Outside Lodgepole Valley

Owner Name	Well ID	Legal	2000	2001	2002	2003	2004	2005	2006	2007	2008	2009
Gerald Wittrock	D122	15-47-32DD	5.60	5.55	5.35	5.43	5.97	6.75	6.23	6.80	7.43	4.90
Alvin Narjes	I129	12-49-3BC	3.15	2.95	3.15	3.20	3.15		3.55	3.10	3.67	
Jack Nienhuser	I128	12-49-17AC	3.60	3.30	3.60	3.80	3.70	3.83	3.90		3.90	
James Higgins	I124	16-51-33AA	1.20	1.25	1.40	1.20						
Marvin Meyer	I127	15-51-28BB	1.93	2.00	2.05	2.20	2.20		2.15			
Patsy Nichols	I126	15-52-14BO	1.50	1.50	1.50	1.55	1.65		1.60			
Steve Hopkins	I123	16-50-27BO	1.80	1.70	1.93	1.95	2.00	2.35	1.90			
Tim Maas	I125	16-52-14DO	2.50		2.50	2.55	2.60	2.55				
Tyler Nienhuser	I128	12-49-17AC	3.60	3.30	3.60	3.80	3.70	3.83	3.90		3.90	
AVG			2.76	2.69	2.79	2.85	3.12	3.86	3.32	4.95	4.73	4.90



South Platte Valley Monitoring Wells

Well ID	1999	2000	2001	2002	2003	2004	2005	2006	2007	2008	2009
D-1-D	6.38	6.50	6.86	7.05	8.08	9.08	9.12	8.62	10.75	13.63	16.65
D-1-M	12.08	11.85	13.10	15.28	17.18	18.32	19.02	21.23	24.63	23.95	25.30
D-1-S	28.20	27.40	25.08	31.28	24.80	26.94	26.73	28.16	29.98	29.88	30.60
D-3-M	9.18	11.08	11.13	10.72	10.35	11.38	11.50	9.07	7.66	7.23	7.18
D-3-S	13.08	13.90	12.63	10.70	10.20	12.25	12.34	9.30	6.95	5.83	4.85
D-4-M	6.85	5.42	6.18	6.22	6.38	5.83	6.08	6.58	5.38	4.85	5.35
D-4-S	6.60	5.38	5.80	7.25	6.02	5.68	5.25	7.55	4.45	4.95	2.95
D-5-M	13.38	13.03	12.78	14.18	8.68	6.45	5.42	4.05	5.82	4.47	5.72
D-5-S	5.13	12.32	7.90	2.50	3.70	3.30	4.23	3.45	8.25	4.23	3.58
AVG	11.21	11.87	11.27	11.68	10.60	11.02	11.08	10.89	11.54	11.00	11.35



Well ID	February	April	August	October
D-1-D	16.65			
D-1-M	25.30			
D-1-S	30.60			
D-2-M	18.90		19.90	
D-2-S	37.20		37.60	
D-3-M	7.70	7.20	7.00	6.80
D-3-S	5.30	4.80	4.90	4.40
D-4-M	5.93	5.70	5.26	5
D-4-S	4.82	4.70	2.54	1.2
D-5-M	6.20	6.00	5.10	5.65
D-5-S	6.30	2.20	5.10	0.70

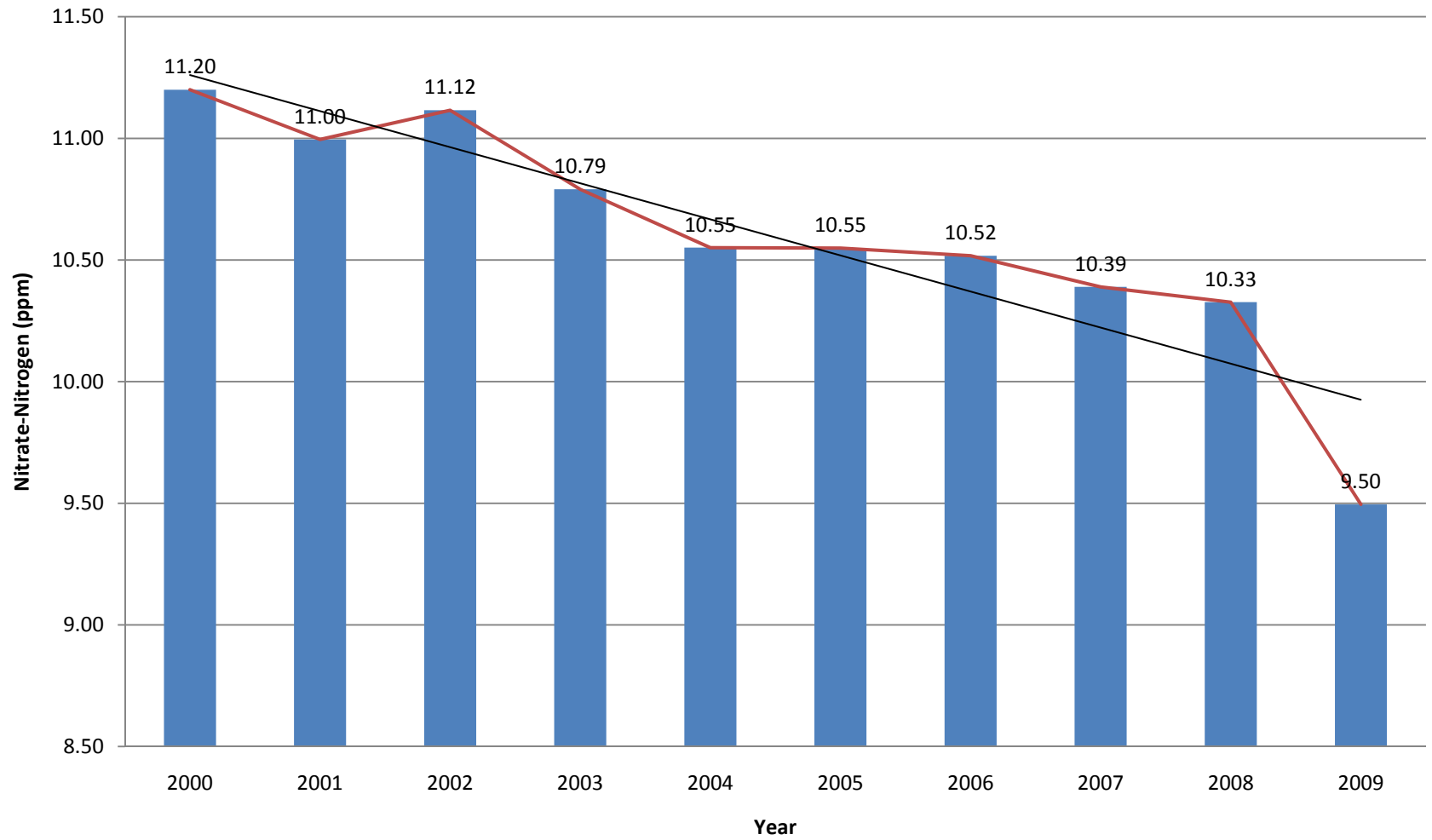
*D-1-D, D-1-M, and D-1-S, are decommissioned. This will affect the composite average for the South Platte Valley in years to come.

South Platte Valley Subarea for Ground Water Quality

Owner Name	Well ID	Legal	2000	2001	2002	2003	2004	2005	2006	2007	2008	2009
Calvin McClung	D074	12-42-2D	11.80	6.70	7.00	6.97	7.60	8.80	9.20	7.40	1.00	1.20
Calvin McClung	D075	12-42-12AB	16.45	14.80	13.85	16.10	15.75	19.40	19.20	18.10	16.20	14.77
Charles Julius Farms	D105	12-44-13AD	4.60	4.20	4.33	13.87	3.85			11.50		
Delbert Harris	D078	12-42-7CCCC	3.80	4.13	4.00	4.05	4.20	4.83	4.43	3.90	3.20	3.10
Forest Creider	D077	12-42-5DDDD	4.47	4.95	4.50	5.60	4.65	4.55	4.50	4.60	4.57	3.45
Ira Orth	D110	12-43-21BBBB	16.60	15.40	15.20	10.55	14.15	18.35	14.15	17.00	16.70	18.15
Max Soper	D076	12-42-3DC	12.15	12.25	11.53	11.65	11.20	10.95	11.10	10.70	9.70	8.70
Roland Duensing	D111	12-43-17DA	13.65	20.95	19.75	23.05	25.20	25.65	23.10	23.00	25.50	19.50
Vera Johnson	D109	12-43-19AB	15.97	16.60	13.95	8.25	5.85	5.45	6.10	6.40	7.05	3.90
Western Irrigation	D113	12-43-14DA	3.30	2.50	3.00	4.40	2.47	2.55	2.35	4.20	3.15	2.80
WH Palser Farms	D079	12-42-9CCC	6.15	7.25	7.50	9.35	10.13	9.60	10.15	12.80	10.75	7.70
Alan Bieber	I119	13-42-36CB	6.80	5.00	6.00	6.55	5.70	4.10	4.00	3.30	6.90	7.90
Ascension Jimenez	I116	12-42-17DAD	18.50	18.77	19.90	20.33	24.50	25.10	25.90		25.35	11.60
Calvin McClung	I144	12-42-13CDB	1.40	1.50	1.50	1.40	1.70	1.45	1.60	1.50	0.40	1.10
CG Farms Inc.	I112	12-43-16BBC1	14.45		22.70	14.85	14.90	10.25	7.85	11.30	8.90	7.50
Charles Julius Farms	I103	12-44-24BA	5.40	3.90	4.17	4.40	4.17	2.00	3.80			
Charles Julius Farms	I104	12-44-13DD	14.20	12.20	11.00	10.40	7.35	8.95	8.90	7.40	5.90	
Charles Steward	I143	12-42-12CB	14.30	17.03	17.80	17.15	18.10	19.10	17.78	17.70	17.10	15.60
Delbert Harris	I115	12-42-18BBBB	3.90	3.95	4.35	4.15	3.70	3.45	3.40	2.80	2.70	2.60
John Jimenez	I141	12-42-10ADC	16.00	16.60	15.65	13.70	13.00	12.10			12.00	11.20
Joyce Beaver	I108	12-43-17CC	10.75	10.95	10.85	11.05	12.05	11.20	11.70		11.10	9.40
Lyle Dehning	I118	13-41-31DDC	22.85	20.70	18.00	17.70	17.00	15.70	12.63	8.20	5.15	4.20
Max Soper	I138	12-42-3CCC	10.95	9.50	11.00	11.00	9.10	8.80	8.97	8.40	9.00	6.20
Max Soper	I139	12-42-4CCC	8.00	8.90	8.30	7.30	6.60	6.45	6.55		4.75	7.10
Mike/Mark McGreer	I137	12-42-2BAC	19.00	18.90	16.26	14.65	12.05	11.85	11.65		9.05	8.30
Philip Armstrong	I136	12-42-1DDDD										
Philip Armstrong	I142	12-42-11CCC	17.00	17.20	16.58	16.85	17.90	17.00	16.40	16.90	15.40	12.20
Philip Armstrong	I159	12-42-1DDC			15.35	15.30	17.40	16.95	17.35	17.20	15.70	15.70
Ruby Porter	I114	12-43-23ABB	7.20	5.40	5.80	5.15	5.25	7.30	8.60	9.90	10.20	
WH Palser Farms	I117	12-42-9CDC	18.90	19.55	17.75	20.15	17.20	10.20	14.05		22.95	23.70
WH Palser Farms	I140	12-42-8ABC	6.10		5.80	5.50	4.30	4.70				
WH Palser Farms	I145	12-42-15BC	5.30	5.60	6.10	4.83	5.80	4.95	5.75	4.40	2.70	2.60
SPNRD	D-1-D		6.50	6.86	7.05	8.08	9.08	9.12	8.62	10.75	13.63	16.65
	D-1-M		11.85	13.10	15.28	17.18	18.32	19.02	21.23	24.63	23.95	25.30
	D-1-S		27.40	25.08	31.28	24.80	26.94	26.73	28.16	29.98	29.88	30.60
	D-3-M		11.08	11.13	10.72	10.35	11.38	11.50	9.07	7.66	7.23	7.18
	D-3-S		13.90	12.63	10.70	10.20	12.25	12.34	9.30	6.95	5.83	4.85
	D-4-M		5.42	6.18	6.22	6.38	5.83	6.08	6.58	5.38	4.85	5.35
	D-4-S		5.38	5.80	7.25	6.02	5.68	5.25	7.55	4.45	4.95	2.95
	D-5-M		13.03	12.78	14.18	8.68	6.45	5.42	4.05	5.82	4.47	5.72
	D-5-S		12.32	7.90	2.50	3.70	3.30	4.23	3.45	8.25	4.23	3.58
AVG			11.20	11.00	11.12	10.79	10.55	10.55	10.52	10.39	10.33	9.50

*Charles Julius Farms wells taken off network.

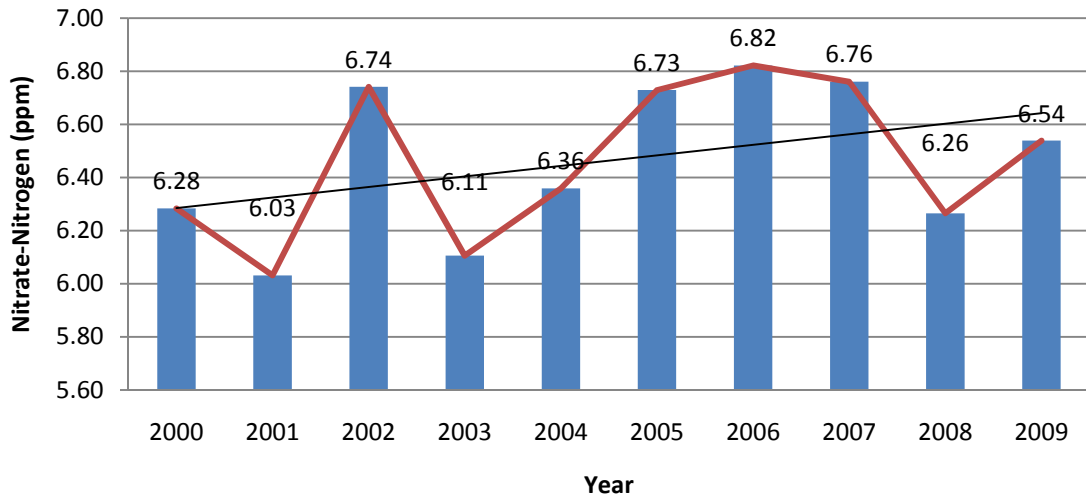
South Platte Valley Subarea Composite Average



Lodgepole Valley: Deuel County Composite Averages

Owner Name	Well ID	Legal	2000	2001	2002	2003	2004	2005	2006	2007	2008	2009
Dale Hummermeier	D098	13-45-36DAC	5.80	5.70	5.75	5.80	5.80	5.77	5.70	5.80	4.55	5.97
Doris Freeman	D097	13-45-24BA	13.40	12.25	13.95	15.35	19.00	24.75	29.45	20.60	38.20	31.55
Garrett Brandt	D101	12-45-24A	8.47	9.75	5.90	7.35	5.75	5.73	5.55	4.20	4.95	6.15
Louis Freeman	D099	12-45-12DB	10.15	10.90	9.05	8.60	8.73	8.80	8.35			
Milton Peterson	D094	13-45-16DDD	5.67	3.40	7.37	6.50	6.35	6.70	6.75	5.80	5.43	5.50
Ron & Nancy Vetter	D092	13-45-7CC2	2.15	2.95	2.50	2.75	2.40	6.50	2.27	2.50	1.70	2.10
SandPoint Cattle Co.	D090	13-46-4BA	3.40	3.37	4.80	4.30	3.93	6.30	6.15	6.20	5.95	6.45
Cordell Boss	I131	12-45-1MD								6.50		
Cordell Boss	I158	12-45-1BCD			6.55	6.27	7.57	6.87			4.50	3.60
Craig Kinoshita	I095	13-45-26AD	11.90	9.85	9.30	9.50	11.10	10.90	12.15	13.70	7.35	8.10
Dave Kalb	I132	12-45-2AB	3.20	3.87	4.70	4.00	5.65	7.60	3.70		3.30	
Kevin Derry	I093	13-45-18CA	8.70	8.25	8.40	7.60	6.90	7.65	7.18	6.90	6.55	5.95
Kevin Derry	I134	13-45-23BC	6.40	6.25	7.30	6.75	7.17	7.10	6.33	8.10	6.05	5.80
Ron & Nancy Vetter	I091	13-45-7CC1				2.80	2.70	2.20	2.80		1.8	
Ron & Nancy Vetter	I135	13-46-12BD	3.45	3.80	4.00	3.43		3.30				
SandPoint Cattle Co.	I088	14-46-33CC	2.60	2.80	3.05	3.45	3.45	4.10	4.05	4.60	2.10	4.00
SandPoint Cattle Co.	I089	13-46-3CC	3.35	3.60	3.50	3.60	3.60	3.55	3.70		3.60	3.70
Sandpoint Cattle Co.	I133	13-45-17BA	2.40	4.80	4.43	4.13	4.35	4.10	4.60	5.40	4.60	3.90
Tony Christensen	I100	12-45-13AA	12.10		18.70	10.65	9.50	8.47	9.27			
SPNRD	D-6		8.46	9.48	9.13	8.38	7.35	5.53	5.33	6.15	7.06	6.33
	D-7		6.38	6.18	6.30	6.85	6.42	6.68	7.00	6.68	6.83	7.03
	D-8		3.50	3.15	2.94	2.98	3.00	2.65	2.78	2.64	2.28	2.53
	D-9		4.20	4.25	3.95	3.28	2.83	2.80	3.34	2.40	2.23	2.50
AVG			6.28	6.03	6.74	6.11	6.36	6.73	6.82	6.76	6.26	6.54

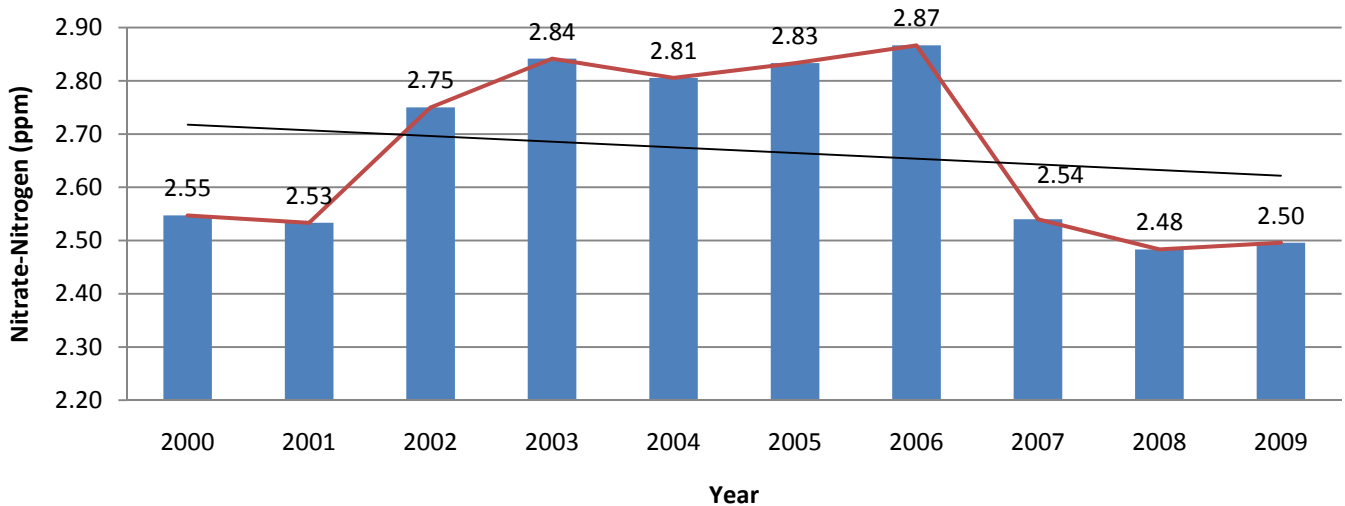
Lodgepole Valley Deuel Subarea Composite Average



Deuel County Tablelands

Owner Name	Well ID	Legal	2000	2001	2002	2003	2004	2005	2006	2007	2008	2009
Avis Leach	D106	12-44-11AD	2.75	2.75	3.20	3.15	3.23	3.20	3.20	3.10	3.20	3.43
Raymond Nitzel	D107	12-43-7DCD	3.25	3.25	3.40	4.05	3.40	3.55	3.55	3.50	3.50	3.60
Dennis Zimmerman	I120	13-42-30DA	3.40	3.30	3.70	3.60	3.65	3.80	3.75		3.30	
Leo Jessen	I072	13-44-9CD	2.20	2.20	2.30	2.50	2.50	2.50	2.65	2.40	1.60	
Ray Agency	I102	12-45-6AD	1.95	2.00	2.10	2.00	2.15	2.15	2.25	2.10	2.10	1.60
Wayne Roth	I073	13-42-3CCCC	1.73	1.70	1.80	1.75	1.90	1.80	1.80	1.60	1.20	1.35
AVG			2.55	2.53	2.75	2.84	2.81	2.83	2.87	2.54	2.48	2.50

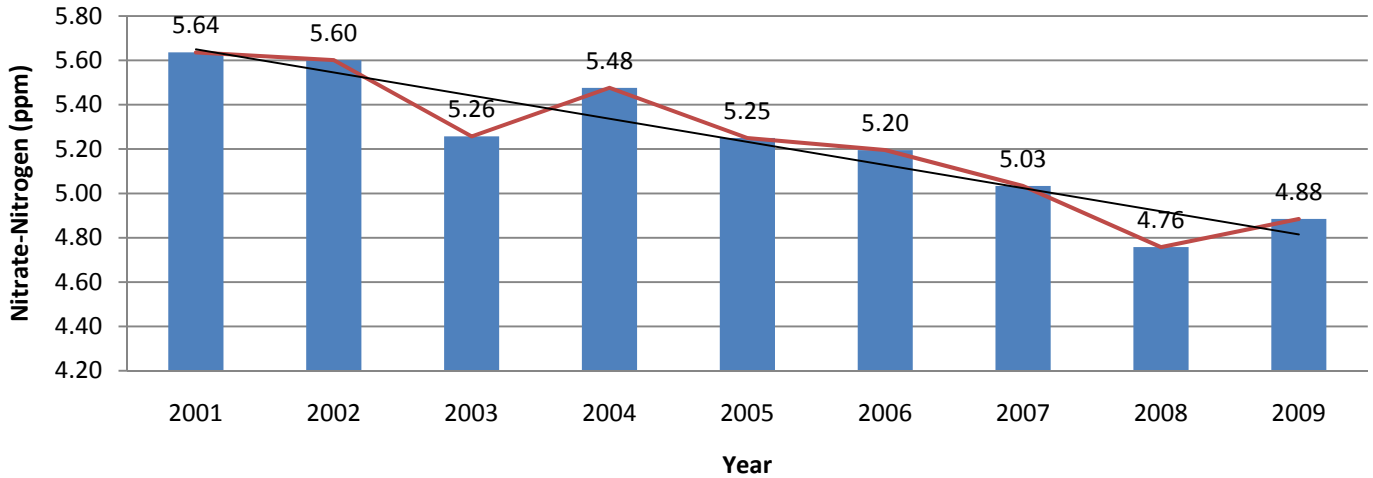
Deuel County Tablelands



Kimball County Composite Averages

Owner Name	Well ID	Legal	2001	2002	2003	2004	2005	2006	2007	2008	2009
Barry Frederick	D017	15-57-36DA	14.75	16.00	4.95	1.00	0.50	0.65	0.30	0.10	0.15
Bill Gross	D003	14-59-12CC	4.50	4.25	4.30	4.13	4.15	4.23	4.15	3.65	4.05
Bill Mueller	D027	15-55-19AD	5.30	5.60	6.07	6.10	6.37	6.50	6.10	5.85	5.00
Cindy Rasmussen	D029	15-55-28C	5.20	5.40	5.35	10.40	6.55	6.40	6.90	5.50	3.55
Dave Allison	D036	16-53-18CCC	4.80	5.35	5.85	5.97	2.60	2.57	2.50	2.15	2.40
Dennis Cauley	D033	15-55-25DDD	7.50	7.17	7.65	9.43	8.35	8.20	7.90	7.65	7.90
Kendall Atkins	D038	15-54-28BCCC	2.60	4.85	5.65	5.85	7.23	3.30	2.90	7.85	5.70
Kenneth Rageth	D004	14-59-13A	8.60	9.50	8.65	8.10	7.80	7.45	7.20	6.40	6.90
Kenton Taylor	D010	13-57-4A	7.05	5.95	9.60	9.30	10.10	9.87	9.60	6.40	8.40
Mike Harroun	D014	15-57-34BB	10.53	9.78	9.90	8.65	8.75	9.30	8.80	9.40	8.85
Monte Herboldsheimer	D007	14-58-2C	3.83	5.53	4.27	4.25	4.50	4.60	4.80	6.10	4.95
Mrs. John Ferguson	D022	15-56-34AA	3.75	4.05	4.07	4.17	4.20	4.13	3.90	3.40	4.20
Oliver Reservoir	D016	15-57-35BA	0.10	0.10	0.10	0.10	0.10	0.10	0.20	0.40	1.05
Rosalie Kielian	D043	15-53-30B	3.70	4.35	5.25	4.90	10.55	5.10	7.10	4.25	5.90
Scott Lockwood	D018	15-57-36DD	17.95	13.90	4.65	6.20	4.73	3.60	1.90	1.67	1.45
Steve Watson	D030	15-55-33AC	9.07	9.15	8.60	8.70	8.40	8.40	7.90	8.30	8.70
Tim Lukassen	D044	15-54-36BB	14.03	14.65	14.25	13.60	9.10	13.35	14.70	12.90	10.60
Alan Adamson	I011	15-57-31AA	3.30	3.33	3.37	3.50	3.37	3.40	3.00	3.10	2.80
Alan Adamson	I013	15-57-33BC	2.70	2.90	3.30	6.80	3.60	3.55	3.60	3.40	2.90
Dave Norberg	I026	14-56-17ABB	5.35	5.75	5.67	5.70	6.00	6.00			4.90
Dennis Cauley	I032	15-54-30DC	8.85	7.65	9.10	10.33	5.15	5.90	5.60		8.90
George Bricker	I035	15-54-7BO	2.40	2.50	2.50	2.60	2.50	2.45		2.50	
Gordon Poss	I034	16-54-30DD		3.00	3.03	3.10	3.10	3.10		2.80	
Gross Wilkinson Inc.	I005	14-58-7CDA	5.40	5.57	5.95	6.10	6.15	5.95	5.20	5.00	4.35
Gross Wilkinson Inc.	I006	14-58-18BA	8.55	8.20	8.90	7.47	7.23	6.55	6.40	5.25	6.30
Jack Hockersmith	I002	14-58-8BD	6.00	6.35	6.60	6.50	6.23	6.10	5.70	5.75	
Jennifer Lynn	I020	15-56-12CB	2.85	2.90	3.07	3.03	3.15	3.65	2.90	3.00	2.00
Jennifer Lynn	I025	15-56-21DO	3.13	3.40	3.15	3.35	3.60	3.80	3.70	3.55	3.40
Jerry Gregory	I023	15-56-25DA	5.40	2.93	3.20			5.20	3.50	3.10	
Jerry Gregory	I028	15-55-19DC		6.50	6.35	6.05	6.20	6.30	4.60	3.40	6.80
Jim Beranek	I009	14-57-30DD	4.40	4.40	4.55	4.60	4.75	4.70	4.90	5.00	
Jim Prince	I008	14-58-1DC	2.90	2.95	2.95	2.95	2.90	3.13	2.85	3.00	2.60
John Miller	I041	15-54-26BA	2.20	2.15	2.15	2.20	2.35	2.20		1.40	2.00
John Perry	I019	14-56-6BB	1.00	1.20	1.40	1.45		6.70			
Ken Johnson	I046	15-53-34CB	2.95	3.05	3.15	3.00	2.85	2.75	2.90		
Kendall Atkins	I039	15-54-28BD	4.85	4.35	4.40		5.80	6.40		7.60	
Lennard Fornstrom	I037	15-54-27DD	5.10	4.90	5.10	5.45	5.90	3.25			5.00
Marquart Farms Inc.	I001	14-59-11DD		5.40		5.20	5.00	4.90	4.60	4.35	
Michael Reuter	I045	15-54-36CA	3.95	4.20	4.33	4.10	4.05	3.85	3.70	2.85	2.60
Mike Harroun	I015	15-57-34BD	3.50	3.85	3.65	4.00	3.75		3.47	3.10	2.60
Mrs. John Ferguson	I024	15-56-34AC	4.60	4.60	4.75	4.70	4.55	4.55	4.50	4.60	4.00
Ray Gunderson	I040	15-54-34ACC	3.93	4.25	4.45	4.40	4.50	4.80	4.40		
Rosalie Kielian	I042	15-53-29DC	6.35	6.65	6.13	6.17	6.00	6.08	6.40	8.10	7.50
Terry Madden	I012	15-57-6AAAA	2.67	2.67	2.70	2.90	2.83	2.90	2.50	2.65	2.40
Vowers & Sons	I031	15-55-35BB	3.33	3.45	3.67	3.35	3.65	3.60	3.50	3.13	2.60
SPNRD	K-1-D	15-53-30CCC2	5.08	5.25	5.05	5.58	6.12	6.52	6.32	6.38	6.65
	K-1-S	15-53-30CCC1	10.43	9.23	8.33	8.93	8.38	9.15	8.53	9.30	9.30
	K-2	15-55-26CBB	15.40	16.20	14.10	13.20	13.30	12.62	12.23	11.08	10.48
	K-3	15-56-27CDD	7.80	8.50	6.55	8.72	7.62	8.50	6.80	6.02	7.07
	K-4	15-57-36ADD	2.30	2.20	2.12	2.18	2.35	2.65	2.38	2.18	2.30
	K-5	14-58-11AAA	2.90	2.88	2.88	2.95	2.88	2.90	2.70	2.58	2.77
	K-6-D	14-59-11DAD2	4.30	3.85	3.77	3.88	3.97	4.14	3.88	3.72	4.03
	K-6-S	14-59-11DAD1	4.68	4.13	3.88	4.02	4.00	4.18	3.93	3.75	4.05
AVG			5.64	5.60	5.26	5.48	5.25	5.20	5.03	4.76	4.88

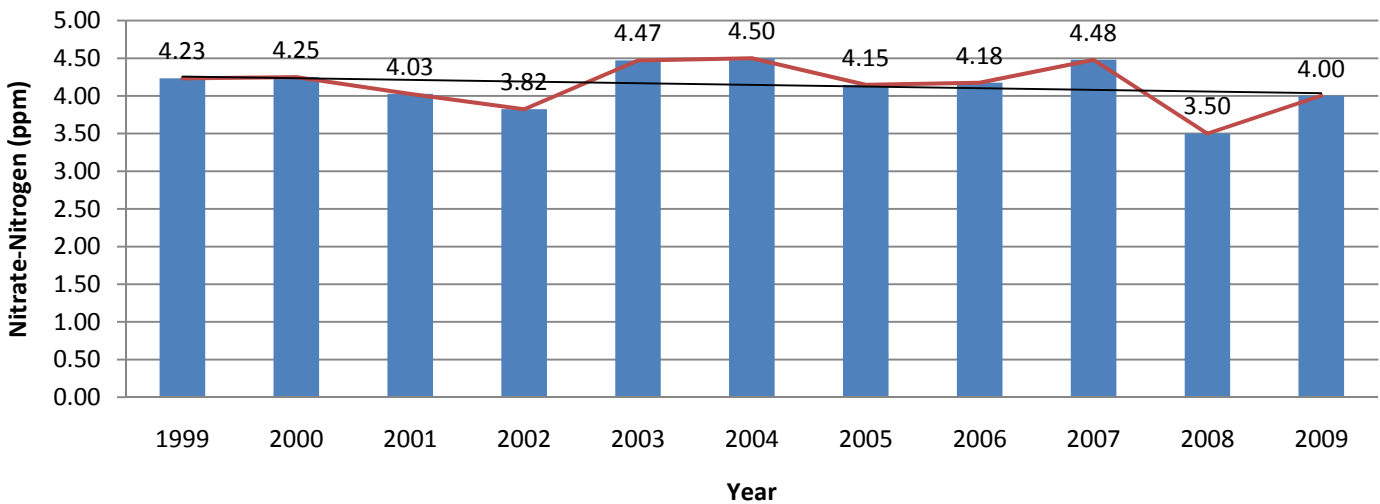
Kimball County Lodgepole Valley Composite Averages



Kimball County Tablelands

Owner Name	Well ID	Legal	1999	2000	2001	2002	2003	2004	2005	2006	2007	2008	2009
Dave Allison	D036	16-53-18CCC	5.90	5.75	4.80	5.35	5.85	5.97	2.60	2.57	2.50	2.15	2.40
Kenton Taylor	D010	13-57-4A	7.30	7.20	7.05	5.95	9.60	9.30	10.10	9.87	9.60	6.40	8.40
George Bricker	I035	15-54-7BO		2.60	2.40	2.50	2.50	2.60	2.50	2.45		2.50	
Gordon Poss	I034	16-54-30DD	2.30	2.90		3.00	3.03	3.10	3.10	3.10		2.80	
Jennifer Lynn	I020	15-56-12CB	2.80	2.85	2.85	2.90	3.07	3.03	3.15	3.65	2.90	3.00	2.00
Jim Beranek	I009	14-57-30DD	4.40	4.20	4.40	4.40	4.55	4.60	4.75	4.70	4.90	5.00	4.82
Terry Madden	I012	15-57-6AAAA	2.70		2.67	2.67	2.70	2.90	2.83	2.90	2.50	2.65	2.40
AVG			4.23	4.25	4.03	3.82	4.47	4.50	4.15	4.18	4.48	3.50	4.00

Kimball County Tablelands



South Platte Valley Ground Water Management Area

