



Water Usage Report

Reporting Years: 2007 Through 2009

This report summarizes agricultural water usage per subarea for the SPNRD. Irrigation allocations began in 2007 for the Lodgepole Creek Management Area and in 2009 for the SPNRD's three county tableland area as well as the South Platte Valley Management Subarea.

Compiled By: Kyle Liebig, Water Resources Manager
Compiled on: July 13, 2010

Table of Contents

Summary Report for Lodgepole Creek Management Area for 2007-2009	3
Pine Bluffs to Oliver Reservoir Subarea Report for 2007-2009	4
Oliver Reservoir to Buffalo Bend Subarea Report for 2007-2009	5
Buffalo Bend to Sidney Subarea Report for 2007-2009	6
Sidney to Colorado Subarea Report for 2007-2009	7
South Platte Valley Subarea Report for 2009	8
Summary Report Tablelands Subarea for 2009	9
Kimball County Tablelands Subarea Report for 2009	10
Cheyenne County Tablelands Subarea Report for 2009	11
Deuel County Tablelands Subarea Report for 2009	12
Summary Report for Entire District for 2009	13
2009 Cost Per Flowmeter to Conduct Fall Readings	14
Allocation Map for SPNRD for 2007 Through 2009	15
Allocation Map for SPNRD for 2009 Through 2012	16
2008 Precipitation Map	17
2009 Precipitation Map	18

**South Platte Natural Resources District
Water Usage Report**

Lodgepole Creek Management Area

Analysis Period: 2007 - 2009

Report Prepared: June 23, 2010

Permitted 3-Year Allocation: 54" and 48" (for 2007 - 2009)

Average Carryforward: 9.21"

Average Remaining Allocation: 23.57"

	2007	2008	2009	Total
Weighted Avg. Inches Pumped*	11.61	10.75	8.52	30.88
High	101.66	33.48	29.38	
Median	11.44	10.13	7.66	
Total Acre-Feet Pumped	36,401.56	35,191.14	26,201.06	97,793.76
Total Acres-Inches Pumped	436,818.70	422,293.68	314,412.73	1,173,525.11
Total Acres-Inches Pumped ÷ By Total Acres	10.94	10.49	7.80	29.23
Total Number of Certified Irrigated Acres				42,606.6
Total Number of Active Certified Irrigated Acres	39,926.1	40,261.6	40,324.7	

Range of Inches Used:

Scale	2007	2008	2009
0 - 4	18%	19%	28%
4.01 - 8	13%	14%	24%
8.01 - 12	25%	31%	30%
12.01 - 16	26%	22%	13%
16.01 - 20	11%	11%	2%
20+	6%	4%	2%

Scale	2007 - 2009
0 - 12	17%
12.01 - 24	18%
24.01 - 36	33%
36.01 - 48	25%
48.01 - 60	5%
60+	1%

Crop Water Usage:**

Crop	2007 Avg. In.	2007 Acres	2008 Avg. In.	2008 Acres	2009 Avg. In.	2009 Acres
Alfalfa	12.5	6,642.0	12.0	6,422.0	8.9	5,379.4
Beans	10.6	604.9	10.9	720.1	7.9	1,647.7
Corn	13.3	16,330.0	12.4	15,608.6	9.7	15,934.4
Fallow	0.0	0.0	0.0	0.0	0.0	42.8
Hay	8.4	1,732.3	7.7	1,873.1	6.4	1,429.0
Other	1.6	129.2	3.3	129.2	6.3	223.2
Pasture	9.7	2,482.1	9.3	2,397.8	6.9	2,551.8
Potatoes	0.0	0.0	0.0	0.0	9.6	129.3
Small Grains	6.6	10,006.9	6.5	10,030.2	3.7	9,053.6
Sugar Beets	16.3	1,283.0	17.8	1,600.8	13.0	2,123.1
Sunflowers	6.9	715.8	9.0	1,479.7	4.3	1,810.6
All Crops	10.9	39,926.1	10.5	40,261.6	7.8	40,324.7

* Calculated by removing the high use tract and the tracts that did not use any water, then calculated the usage of all tracts individually and averaged those numbers.

** Crop Water Usage is based off of the number of acres per crop, which are based on field observations taken at the time flow meters are read. Crop Water Usage could be subject to change as more accurate crop-acre information becomes available.

**South Platte Natural Resources District
Water Usage Report**

Subarea: Pine Bluffs to Oliver Reservoir

Analysis Period: 2007 - 2009

Report Prepared: June 22, 2010

Permitted 3-Year Allocation: 48" (for 2007 - 2009)

Average Carryforward: 8.74"

Average Remaining Allocation: 19"

	2007	2008	2009	Total
Weighted Avg. Inches Pumped*	9.81	10.90	9.34	30.04
High	16.75	17.37	23.60	
Median	9.54	11.58	9.93	
Total Acre-Feet Pumped	3,366.64	3,611.24	3,285.20	10,263.07
Total Acres-Inches Pumped	40,399.63	43,334.85	39,422.38	123,156.87
Total Acres-Inches Pumped ÷ By Total Acres	10.23	10.97	9.98	31.17
Total Number of Certified Irrigated Acres				3,984.9
Total Number of Active Certified Irrigated Acres	3,950.6	3,950.6	3,950.6	

Range of Inches Used:

Scale	2007	2008	2009	Scale	2007 - 2009
0 - 4	19%	13%	10%	0 - 12	10%
4.01 - 8	19%	3%	29%	12.01 - 24	16%
8.01 - 12	26%	42%	42%	24.01 - 36	45%
12.01 - 16	32%	32%	13%	36.01 - 48	26%
16.01 - 20	3%	10%	3%	48.01 - 60	3%
20+	0%	0%	3%	60+	0%

Crop Water Usage:**

Crop	2007 Avg. In.	2007 Acres	2008 Avg. In.	2008 Acres	2009 Avg. In.	2009 Acres
Alfalfa	11.7	919.1	12.7	1,192.3	10.6	981.6
Beans	0.0	0.0	11.2	130.7	8.1	139.3
Corn	10.5	995.5	12.6	757.6	10.2	978.7
Hay	3.8	21.2	0.0	0.0	0.0	0.0
Other	0.2	36.5	0.0	36.5	0.0	36.5
Pasture	10.8	1,160.6	9.5	995.1	11.3	1,163.8
Potatoes	0.0	0.0	0.0	0.0	9.6	129.3
Small Grains	8.1	817.8	8.7	758.3	6.5	460.6
Sunflowers	0.0	0.0	14.8	80.2	7.2	61.0
All Crops	10.2	3,950.6	11.0	3,950.6	10.0	3,950.6

* Calculated by removing the high use tract and the tracts that did not use any water, then calculated the usage of all tracts individually and averaged those numbers.

** Crop Water Usage is based off of the number of acres per crop, which are based on field observations taken at the time flow meters are read. Crop Water Usage could be subject to change as more accurate crop-acre information becomes available.

**South Platte Natural Resources District
Water Usage Report**

Subarea: Oliver Reservoir to Buffalo Bend

Analysis Period: 2007 - 2009

Report Prepared: June 23, 2010

Permitted 3-Year Allocation: 54" (for 2007 - 2009)

Average Carryforward: 9.08"

Average Remaining Allocation: 19.04"

	2007	2008	2009	Total
Weighted Avg. Inches Pumped*	13.37	12.71	9.50	35.57
High	101.66	33.48	27.53	
Median	13.19	12.68	9.59	
Total Acre-Feet Pumped	16,170.22	15,990.82	11,347.83	43,508.87
Total Acres-Inches Pumped	194,042.64	191,889.82	136,173.95	522,106.40
Total Acres-Inches Pumped ÷ By Total Acres	13.17	13.05	9.22	35.44
Total Number of Certified Irrigated Acres				15,449.7
Total Number of Active Certified Irrigated Acres	14,739.0	14,702.9	14,766.0	

Range of Inches Used:

Scale	2007	2008	2009	Scale	2007 - 2009
0 - 4	9%	11%	18%	0 - 12	9%
4.01 - 8	10%	8%	20%	12.01 - 24	9%
8.01 - 12	22%	26%	38%	24.01 - 36	33%
12.01 - 16	30%	30%	21%	36.01 - 48	39%
16.01 - 20	19%	20%	1%	48.01 - 60	7%
20+	10%	5%	1%	60+	2%

Crop Water Usage:**

Crop	2007 Avg. In.	2007 Acres	2008 Avg. In.	2008 Acres	2009 Avg. In.	2009 Acres
Alfalfa	13.5	2,559.9	14.2	1,943.1	9.6	1,786.1
Beans	16.2	102.4	12.1	196.4	8.6	668.7
Corn	14.2	6,845.6	13.7	6,712.5	10.4	5,675.6
Fallow	0.0	0.0	0.0	0.0	0.0	42.8
Hay	16.6	234.5	9.7	266.2	8.3	351.2
Other	1.0	25.0	0.1	25.0	10.8	119.0
Pasture	11.9	710.0	13.2	781.4	4.0	523.3
Small Grains	9.2	2,533.1	8.4	2,278.4	6.0	2,560.2
Sugar Beets	16.3	1,283.0	17.8	1,600.8	13.0	2,123.1
Sunflowers	8.8	445.6	10.9	899.2	5.3	916.1
All Crops	13.2	14,739.0	13.1	14,702.9	9.2	14,766.0

* Calculated by removing the high use tract and the tracts that did not use any water, then calculated the usage of all tracts individually and averaged those numbers.

** Crop Water Usage is based off of the number of acres per crop, which are based on field observations taken at the time flow meters are read. Crop Water Usage could be subject to change as more accurate crop-acre information becomes available.

**South Platte Natural Resources District
Water Usage Report**

Subarea: Buffalo Bend to Sidney

Analysis Period: 2007 - 2009

Report Prepared: June 22, 2010

Permitted 3-Year Allocation: 48" (for 2007 - 2009)

Average Carryforward: 9.63"

Average Remaining Allocation: 28.05"

	2007	2008	2009	Total
Weighted Avg. Inches Pumped*	7.81	7.77	5.79	21.37
High	19.08	17.73	16.56	
Median	8.08	7.91	5.05	
Total Acre-Feet Pumped	6,133.56	5,886.44	4,059.86	16,079.86
Total Acres-Inches Pumped	73,602.69	70,637.33	48,718.29	192,958.31
Total Acres-Inches Pumped ÷ By Total Acres	7.75	7.43	5.13	20.31
Total Number of Certified Irrigated acres				10,357.2
Total Number of Active Certified Irrigated Acres	9,502.0	9,502.0	9,502.0	

Range of Inches Used:

Scale	2007	2008	2009
0 - 4	26%	28%	48%
4.01 - 8	23%	25%	28%
8.01 - 12	30%	36%	17%
12.01 - 16	16%	9%	6%
16.01 - 20	4%	3%	1%
20+	0%	0%	0%

Scale	2007 - 2009
0 - 12	32%
12.01 - 24	32%
24.01 - 36	25%
36.01 - 48	10%
48.01 - 60	0%
60+	0%

Crop Water Usage:**

Crop	2007 Avg. In.	2007 Acres	2008 Avg. In.	2008 Acres	2009 Avg. In.	2009 Acres
Alfalfa	11.9	1,191.5	11.7	1,348.6	10.3	1,094.7
Corn	11.2	2,324.3	9.4	2,321.1	8.5	2,618.9
Hay	9.0	864.7	7.3	992.6	4.5	520.2
Pasture	3.5	189.1	5.6	129.1	3.2	129.1
Small Grains	5.1	4,836.3	5.3	4,532.1	2.4	4,525.0
Sunflowers	6.2	96.1	5.4	178.6	2.4	614.2
All Crops	7.7	9,502.0	7.4	9,502.0	5.1	9,502.0

* Calculated by removing the high use tract and the tracts that did not use any water, then calculated the usage of all tracts individually and averaged those numbers.

** Crop Water Usage is based off of the number of acres per crop, which are based on field observations taken at the time flow meters are read. Crop Water Usage could be subject to change as more accurate crop-acre information becomes available.

**South Platte Natural Resources District
Water Usage Report**

Subarea: Sidney to Colorado

Analysis Period: 2007 - 2009

Report Prepared: June 23, 2010

Permitted 3-Year Allocation: 54" (for 2007 - 2009)

Average Carryforward: 9.23"

Average Remaining Allocation: 27.09"

	2007	2008	2009	Total
Weighted Avg. Inches Pumped*	11.63	9.79	8.26	29.68
High	59.36	33.31	29.38	
Median	11.14	8.91	7.07	
Total Acre-Feet Pumped	10,731.14	9,702.64	7,508.18	27,941.96
Total Acres-Inches Pumped	128,773.74	116,431.67	90,098.12	335,303.52
Total Acres-Inches Pumped ÷ By Total Acres	10.97	9.62	7.44	28.03
Total Number of Certified Irrigated Acres				12,814.8
Total Number of Active Certified Irrigated Acres	11,734.5	12,106.0	12,106.0	

Range of Inches Used:

Scale	2007	2008	2009	Scale	2007 - 2009
0 - 4	22%	23%	33%	0 - 12	19%
4.01 - 8	10%	17%	26%	12.01 - 24	20%
8.01 - 12	24%	31%	26%	24.01 - 36	34%
12.01 - 16	27%	18%	8%	36.01 - 48	19%
16.01 - 20	10%	6%	4%	48.01 - 60	6%
20+	7%	5%	3%	60+	2%

Crop Water Usage:**

Crop	2007 Avg. In.	2007 Acres	2008 Avg. In.	2008 Acres	2009 Avg. In.	2009 Acres
Alfalfa	12.0	1,971.4	9.7	1,938.1	5.9	1,517.0
Beans	9.5	502.5	10.2	393.0	7.3	839.7
Corn	13.5	6,164.7	12.1	5,817.5	9.6	6,661.2
Hay	4.6	611.8	7.3	614.4	7.0	557.6
Other	2.6	67.7	6.2	67.7	1.7	67.7
Pasture	5.9	422.5	3.7	492.2	2.5	735.6
Small Grains	6.2	1,819.8	6.0	2,461.3	2.8	1,507.8
Sunflowers	2.6	174.1	4.6	321.9	4.8	219.4
All Crops	11.0	11,734.5	9.6	12,106.0	7.4	12,106.0

* Calculated by removing the high use tract and the tracts that did not use any water, then calculated the usage of all tracts individually and averaged those numbers.

** Crop Water Usage is based off of the number of acres per crop, which are based on field observations taken at the time flow meters are read. Crop Water Usage could be subject to change as more accurate crop-acre information becomes available.

**South Platte Natural Resources District
Water Usage Report**

Subarea: South Platte Valley

Analysis Period: 2009

Report Prepared: June 23, 2010

Permitted 4-Year Allocation: 80" (for 2009 - 2012)

	2009
Weighted Avg. Inches Pumped*	13.35
High	36.65
Median	12.54
Total Acre-Feet Pumped	9,530.88
Total Acres-Inches Pumped	114,370.50
Total Acres-Inches Pumped ÷ By Total Acres	11.82
Total Number of Certified Irrigated Acres	9,950.6
Total Number of Active Certified Irrigated Acres	9,678.6

Range of Inches Used:

Scale	2009
0 - 4	18%
4.01 - 8	2%
8.01 - 12	24%
12.01 - 16	31%
16.01 - 20	14%
20+	11%

Crop Water Usage:**

Crop	2009 Avg. In.	2009 Acres
Alfalfa	6.6	573.2
Beans	12.9	209.0
Corn	13.1	7,789.7
Hay	0.0	254.2
Pasture	2.0	48.8
Small Grains	4.0	433.7
Sugar Beets	12.5	293.4
Sunflowers	4.7	76.7
All Crops	11.8	9,678.6

* Calculated by removing the high use tract and the tracts that did not use any water, then calculated the usage of all tracts individually and averaged those numbers.

** Crop Water Usage is based off of the number of acres per crop, which are based on field observations taken at the time flow meters are read. Crop Water Usage could be subject to change as more accurate crop-acre information becomes available.

South Platte Natural Resources District Water Usage Report

Tablelands

Analysis Period: 2009

Report Prepared: June 23, 2010

Permitted 4-Year Allocation: 80" (for 2009 - 2012)

	2009
Weighted Avg. Inches Pumped*	7.16
High	51.02
Median	6.29
Total Acre-Feet Pumped	44,824.58
Total Acres-Inches Pumped	537,894.98
Total Acres-Inches Pumped ÷ By Total Acres	6.87
Total Number of Certified Irrigated Acres	80,702.2
Total Number of Active Certified Irrigated Acres	78,332.3

Range of Inches Used:

Scale	2009
0 - 4	26%
4.01 - 8	37%
8.01 - 12	24%
12.01 - 16	11%
16.01 - 20	1%
20+	0%

Crop Water Usage**:

Crop	2009 Avg. In.	2009 Acres
Alfalfa	9.3	6,969.9
Beans	5.6	6,484.7
Corn	9.0	25,828.5
Hay	6.2	2,386.1
Other	2.8	318.4
Pasture	5.8	3,638.0
Small Grains	4.3	24,854.8
Sugar Beets	10.7	4,590.9
Sunflowers	4.1	3,260.9
All Crops	6.9	78,332.3

* Calculated by removing the high use tract and the tracts that did not use any water, then calculated the usage of all tracts individually and averaged those numbers.

** Crop Water Usage is based off of the number of acres per crop, which are based on field observations taken at the time flow meters are read. Crop Water Usage could be subject to change as more accurate crop-acre information becomes available.

**South Platte Natural Resources District
Water Usage Report**

Kimball County Tablelands

Analysis Period: 2009

Report Prepared: June 23, 2010

Permitted 4-Year Allocation: 80" (for 2009 - 2012)

	2009
Weighted Avg. Inches Pumped*	7.82
High	51.02
Median	7.37
Total Acre-Feet Pumped	14,988.75
Total Acres-Inches Pumped	179,864.97
Total Acres-Inches Pumped ÷ By Total Acres	7.11
Total Number of Certified Irrigated Acres	25,920.2
Total Number of Active Certified Irrigated Acres	25,313.0

Range of Inches Used:

Scale	2009
0 - 4	27%
4.01 - 8	29%
8.01 - 12	28%
12.01 - 16	13%
16.01 - 20	2%
20+	1%

Crop Water Usage:**

Crop	2009 Avg. In.	2009 Acres
Alfalfa	11.4	3,318.0
Beans	7.7	1,158.0
Corn	8.2	7,385.9
Hay	9.5	780.5
Other	4.3	124.4
Pasture	6.2	2,658.6
Small Grains	3.5	6,691.2
Sugar Beets	10.6	1,729.2
Sunflowers	4.2	1,467.0
All Crops	7.1	25,313.0

* Calculated by removing the high use tract and the tracts that did not use any water, then calculated the usage of all tracts individually and averaged those numbers.

** Crop Water Usage is based off of the number of acres per crop, which are based on field observations taken at the time flow meters are read. Crop Water Usage could be subject to change as more accurate crop-acre information becomes available.

**South Platte Natural Resources District
Water Usage Report**

Cheyenne County Tablelands

Analysis Period: 2009

Report Prepared: June 23, 2010

Permitted 4-Year Allocation: 80" (for 2009 - 2012)

	2009
Weighted Avg. Inches Pumped*	6.69
High	44.16
Median	6.04
Total Acre-Feet Pumped	24,293.26
Total Acres-Inches Pumped	291,519.14
Total Acres-Inches Pumped ÷ By Total Acres	6.67
Total Number of Certified Irrigated Acres	44,859.1
Total Number of Active Certified Irrigated Acres	43,679.3

Range of Inches Used:

Scale	2009
0 - 4	27%
4.01 - 8	40%
8.01 - 12	21%
12.01 - 16	10%
16.01 - 20	1%
20+	0%

Crop Water Usage:**

Crop	2009 Avg. In.	2009 Acres
Alfalfa	7.6	2,258.3
Beans	5.3	4,512.9
Corn	9.0	14,377.5
Hay	4.3	1,036.3
Other	0.1	132.1
Pasture	4.6	979.4
Small Grains	4.7	16,062.7
Sugar Beets	11.1	2,651.2
Sunflowers	4.2	1,668.9
All Crops	6.7	43,679.3

* Calculated by removing the high use tract and the tracts that did not use any water, then calculated the usage of all tracts individually and averaged those numbers.

** Crop Water Usage is based off of the number of acres per crop, which are based on field observations taken at the time flow meters are read. Crop Water Usage could be subject to change as more accurate crop-acre information becomes available.

**South Platte Natural Resources District
Water Usage Report**

Deuel County Tablelands

Analysis Period: 2009

Report Prepared: June 23, 2010

Permitted 4-Year Allocation: 80" (for 2009 - 2012)

	2009
Weighted Avg. Inches Pumped*	6.87
High	15.33
Median	6.98
Total Acre-Feet Pumped	5,542.57
Total Acres-Inches Pumped	66,510.88
Total Acres-Inches Pumped ÷ By Total Acres	7.12
Total Number of Certified Irrigated Acres	9,922.9
Total Number of Active Certified Irrigated Acres	9,340.0

Range of Inches Used:

Scale	2009
0 - 4	19%
4.01 - 8	42%
8.01 - 12	33%
12.01 - 16	7%
16.01 - 20	0%
20+	0%

Crop Water Usage:**

Crop	2009 Avg. In.	2009 Acres
Alfalfa	6.9	1,393.6
Beans	4.5	813.8
Corn	10.2	4,065.1
Hay	5.1	569.3
Other	5.5	61.9
Small Grains	3.2	2,100.9
Sugar Beets	7.2	210.5
Sunflowers	1.8	125.0
All Crops	7.1	9,340.0

* Calculated by removing the high use tract and the tracts that did not use any water, then calculated the usage of all tracts individually and averaged those numbers.

** Crop Water Usage is based off of the number of acres per crop, which are based on field observations taken at the time flow meters are read. Crop Water Usage could be subject to change as more accurate crop-acre information becomes available.

South Platte Natural Resources District Water Usage Report

2009 Districtwide

Analysis Period: 2009

Report Prepared: June 23, 2010

Permitted 3-Year Allocation: 48" (for 2007 - 2009)

	2009
Weighted Avg. Inches Pumped*	8.33
High	51.02
Median	7.33
Total Acre-Feet Pumped	80,556.52
Total Acres-Inches Pumped	966,678.22
Total Acres-Inches Pumped ÷ By Total Acres	7.53
Total Number of Certified Irrigated Acres	133,259.5
Total Number of Active Certified Irrigated Acres	128,335.5

Range of Inches Used:

Scale	2009
0 - 4	26%
4.01 - 8	28%
8.01 - 12	27%
12.01 - 16	14%
16.01 - 20	3%
20+	2%

Crop Water Usage**:

Crop	2009 Avg. In.	2009 Acres
Alfalfa	9.0	12,922.4
Beans	6.2	8,341.3
Corn	9.9	49,552.6
Fallow	0.0	42.8
Hay	5.9	4,069.3
Other	4.2	541.6
Pasture	6.2	6,238.5
Potatoes	9.6	129.3
Small Grains	4.1	34,342.1
Sugar Beets	11.5	7,007.5
Sunflowers	4.2	5,148.3
All Crops	7.5	128,335.5

* Calculated by removing the high use tract and the tracts that did not use any water, then calculated the usage of all tracts individually and averaged those numbers.

** Crop Water Usage is based off of the number of acres per crop, which are based on field observations taken at the time flow meters are read. Crop Water Usage could be subject to change as more accurate crop-acre information becomes available.

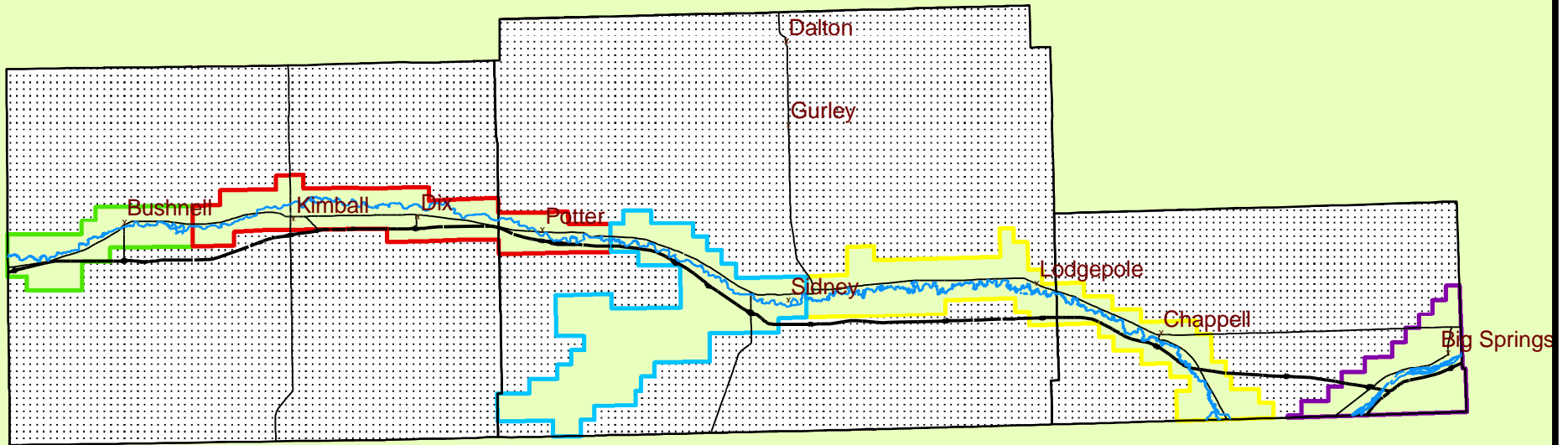
What It Costs For the SPNRD to Read Flow Meters	
In-Kind Time*	
	Galen Wittrock
	Travis Glanz
	Ryan Reisdorff
	Kyle Liebig
	Jodi Livingstone
	<i>Subtotal</i>
	\$7,684.11
Vehicle Fuel & Repair	\$1,246.13
Misc.	\$16.50
Postage	\$156.28
Total	\$9,103.02
# of FM's Read	1040
\$/Meter	\$8.75

*Includes: Salary & Benefits

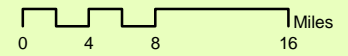
Allocation Subareas and Allocations Through 2009



Explanation	
	Pine Bluffs to Oliver Reservoir; ; 16"/year or 48" for 2007 through 2009
	Oliver Reservoir to Buffalo Bend; 18"/year or 54" for 2007 through 2009
	Buffalo Bend to Sidney; 16"/year or 48" for 2007 through 2009
	Sidney to Colorado; ; 18"/year or 54" for 2007 through 2009
	South Platte Valley; 20"/year or 80" for 2009 through 2012
	Tablelands; 20"/year or 80" for 2009 through 2012



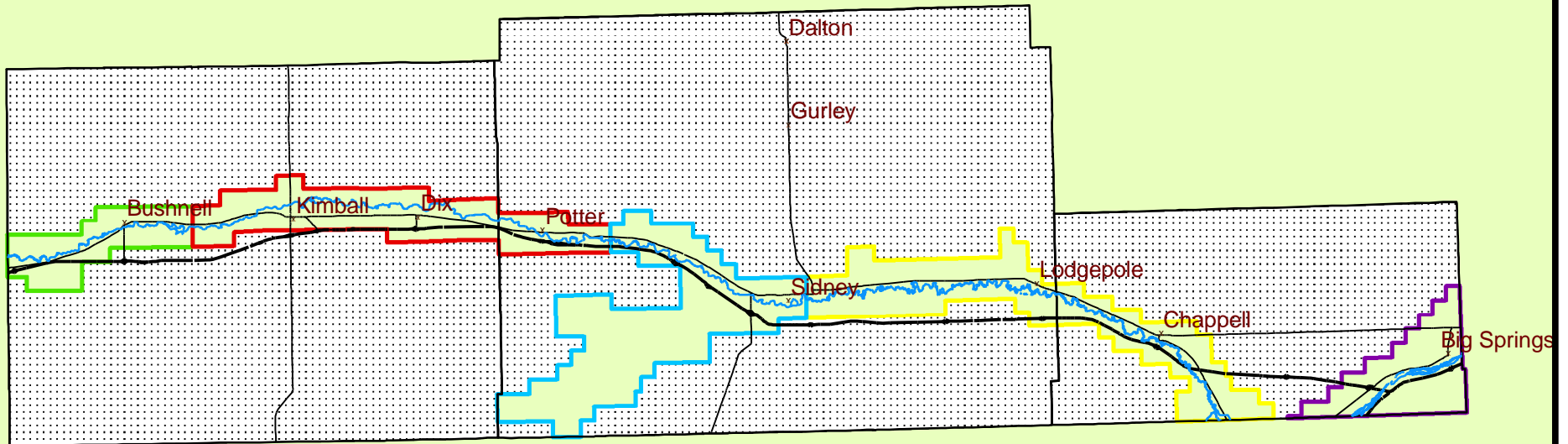
4



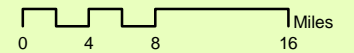
Allocation Subareas and Allocations Through 2012



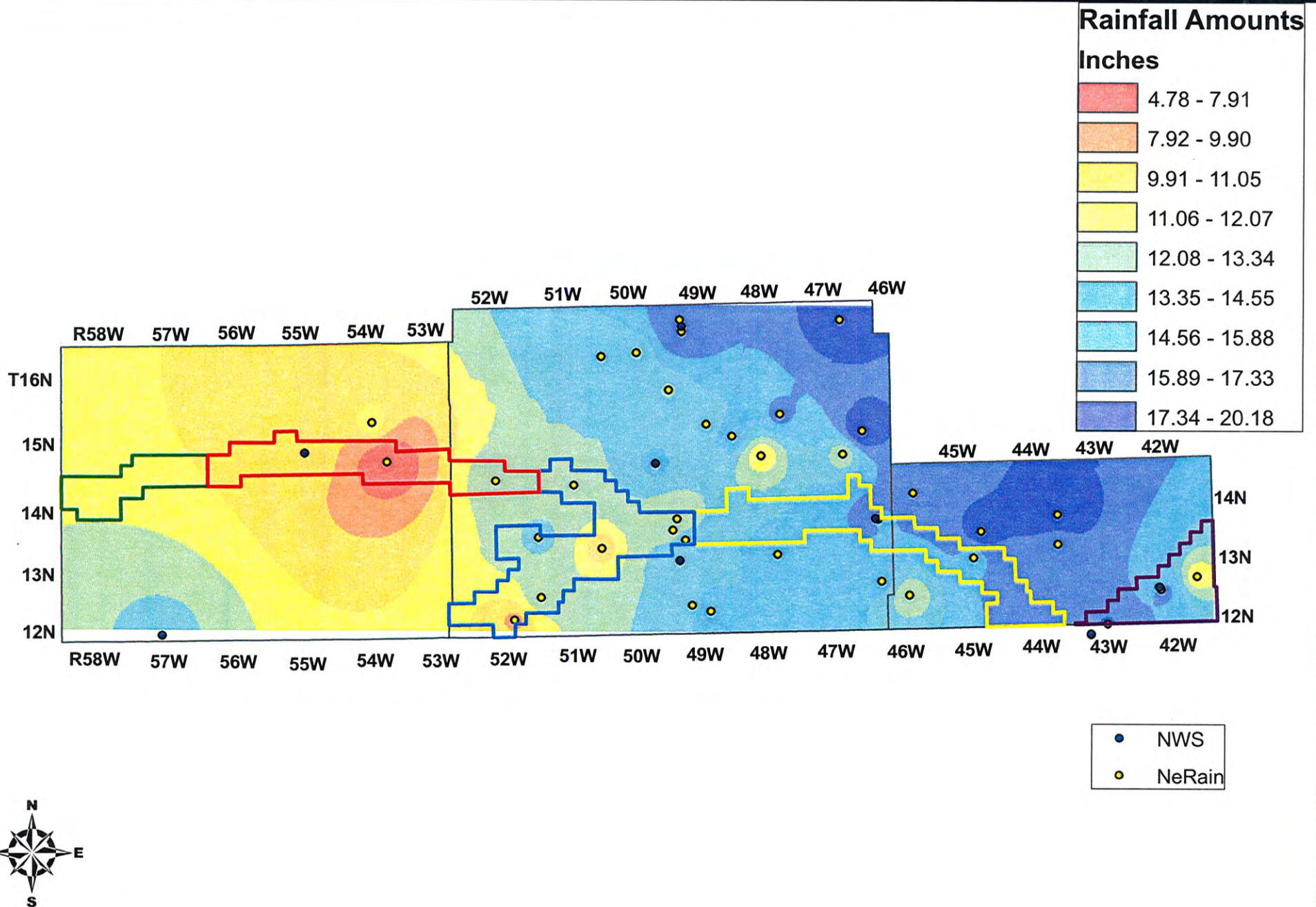
Explanation	
	Pine Bluffs to Oliver Reservoir; 14"/year or 42" for 2010 through 2012
	Oliver Reservoir to Buffalo Bend; 16"/year or 48" for 2010 through 2012
	Buffalo Bend to Sidney; 14"/year or 42" for 2010 through 2012
	Sidney to Colorado; 16"/year or 48" for 2010 through 2012
	South Platte Valley; 20"/year or 80" for 2009 through 2012
	Tablelands; 20"/year or 80" for 2009 through 2012



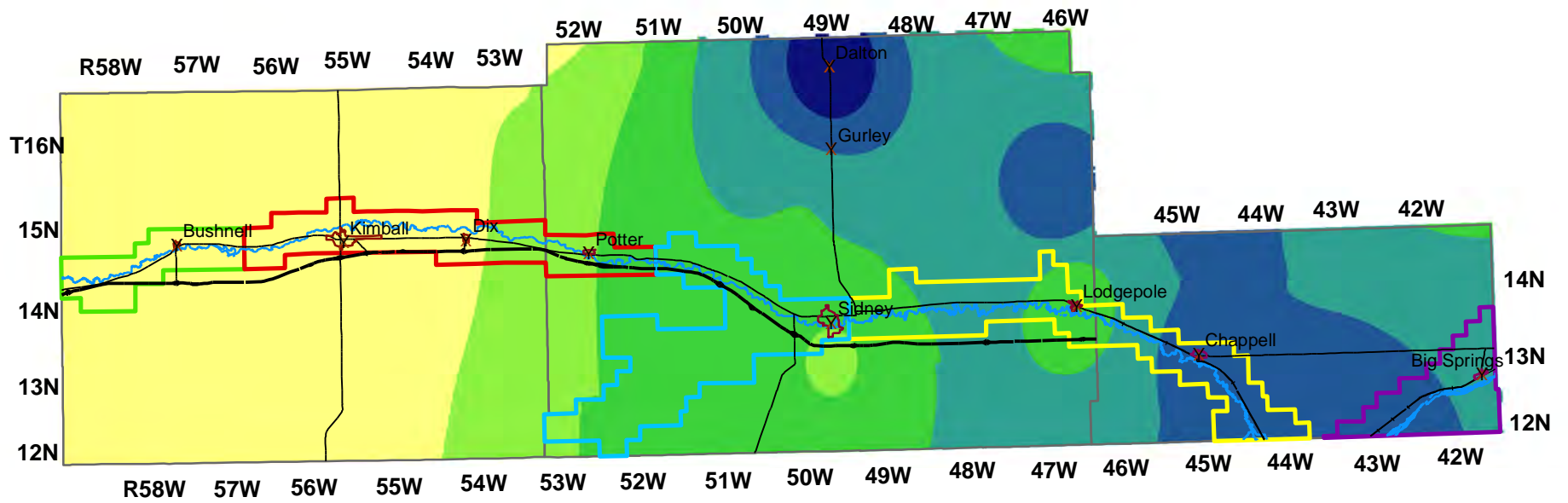
4



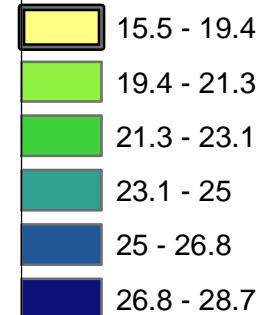
SPNRD Rainfall Amounts (March 1 - October 31)



SPNRD Rainfall Amounts (March 1 - October 31, 2009)



Rainfall Amounts Inches



County	2008 Precip. Ave.	2009 Precip. Ave.	Historical Ave.
Kimball	10.26	18.35	14.87
Cheyenne	14.44	22.27	15.85
Deuel	16.07	24.35	16.83

